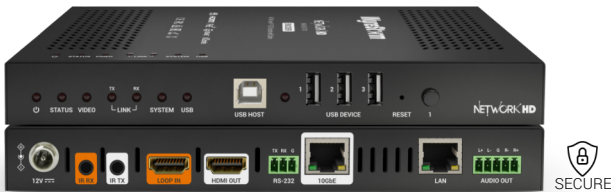


### NetworkHD 600 Series (SDVoE)

#### NHD-610-TX | NHD-610-RX



#### Key Features

- Pixel-perfect transmissions up to 4K60 4:4:4 8bit with Dolby Vision/HDR compatibility
- High speed USB 2.0 connectivity for extension of USB peripheral devices
- 2CH Dante/AES67 audio output on NHD-610-TX encoder

#### In the Box

- 1x NHD-610-TX or NHD-610-RX
- 1x IR Emitter
- 1x IR Receiver
- 1x Pair of NHD-000-RACK4 Brackets
- 1x Pair of Wall Brackets
- 1x 12V DC Power Supply (US/UK/EU/AU)
- 1x 3-pin Phoenix Connector (for RS-232)
- 1x 5-pin Phoenix Connector (for analog audio)

#### NHD-600-TRX | NHD-600-TRXF



#### Key Features

- Operates as a transceiver that can encode and decode simultaneously
- Transmissions up to 4K60 4:4:4 8bit with Dolby Vision/HDR compatibility
- USB HID connectivity for extension of keyboard and mouse
- Zero latency A/V transmissions using Genlock processing
- Instant matrix switching speeds using Fast Switch processing
- Native video wall (8x8) and multiview processing (16 windows)

#### In the Box

- 1x NHD-600-TRX or NHD-600-TRXF
- 1x IR Emitter
- 1x IR Receiver
- 1x Pair of Wall Brackets
- 1x Pair of NHD-000-RACK4 Brackets
- 1x 12V 2A DC Power Supply (US/UK/EU/AU)
- 1x 3-pin Phoenix Connector (for RS-232)
- 1x 5-pin Phoenix Connector (for analog audio)

#### TRXF Additional Features

- Fiber transport supporting up to 300m distance using OM3 multimode
- High speed USB 2.0 connecting for extension of USB peripherals over the network

### NetworkHD 500 Series (JPEG 2000)

#### NHD-500-TX | NHD-500-RX



#### Key Features

- HDMI 2.0 encoding/decoding up to 4K60 4:4:4 8bit with Dolby Vision/HDR compatibility
- Ethernet or Fiber connections (550m w/ OM3 MMF or 10km with SMF)
- USB connectivity for extension and routing of USB peripheral devices
- Ultra-low latency transmissions of less than a single video frame

#### In the Box

- 1x NHD-500-TX or NHD-500-RX
- 1x IR Emitter
- 1x IR Receiver
- 1x Pair of NHD-000-RACK4 Brackets
- 1x Pair of Wall Brackets
- 1x 3-pin Phoenix Connector (for RS-232)
- 1x 5-pin Phoenix Connector (for analog audio)

- NHD-500-RX decoder capable of 16x16 video wall processing, including mosaic
- High definition preview streams for control system interfaces
- Audio Return Channel via HDMI or Toslink

## NHD-500-DNT-TX



### In the Box

- 1x NHD-500-DNT-TX Transmitter
- 1x IR Emitter
- 1x IR Receiver
- 2x Wall Mounting Brackets
- 2x Rack Mounting Brackets
- 1x 3-pin Terminal Block
- 1x 5-pin Terminal Block

### Key Features

- HDMI 2.0 encoding/decoding up to 4K60 4:4:4 8bit with Dolby Vision/HDR compatibility
- 2CH Dante/AES67 network audio output
- Ethernet or Fiber connections (550m w/ OM3 MMF or 10km with SMF)

- USB connectivity for extension and routing of USB peripheral devices
- Ultra-low latency transmissions of less than a single video frame
- High definition preview streams for control system interfaces

## NHD-500-E-TX | NHD-500-E-RX



### In the Box

- 1x NHD-500-E-TX or NHD-500-E-RX
- 1x 5-pin Terminal Block
- 1x IR Emitter
- 1x Pair of Wall Brackets
- 1x Pair of Rack Brackets

### Key Features

- Supports encoding full HDMI 2.0 content up to 4K60 4:4:4 8bit
- Compatible with Dolby Vision, HDR10 & HLG content up to 60Hz

- Essential connectivity for streamlined audio and video distribution
- Balanced audio de-embed for connecting external audio systems

## NHD-500-IW-TX



### In the Box

- 1x NHD-500-IW-TX
- 1x 2-pin phoenix connector

### Key Features

- Supports encoding full 4K60 4:4:4 8bit or RGB content
- 2-Gang US style in-wall form factor
- HDMI and USB-C Switchable inputs

- USB extension and routing for peripheral USB devices
- Dedicated stereo input for connecting external audio devices

## Multiview Processor

### NHD-0401-MV



### In the Box

- 1x NHD-0401-MV Multiview Processor
- 1x 12V Power Supply (US/EU/AU/UK)
- 1x IR Remote
- 1x IR Receiver Cable
- 1x 3-pin Terminal Block
- 2x Mounting Brackets
- 1x QuickStart Guide

### Key Features

- 4-Inputs supporting 4K60 source content
- Multiview processing up to 4 inputs simultaneously

- Works seamlessly with NetworkHD 400 & 500 series
- Can be used as a standalone multiview processor

# NetworkHD 400 Series (JPEG 2000)

## NHD-400-TX | NHD-400-RX



### Key Features

- Encoding/decoding up to 4K30 4:4:4 with HDR10/HLG compatibility
- USB connectivity for extension and routing of USB peripheral devices
- Ultra-low, single frame latency
- NHD-400-RX decoder capable of 16x16 video wall processing, including

### In the Box

- 1x NHD-400-TX or NHD-400-RX
- 1x Pair of Wall Brackets
- 1x Pair of NHD-000-RACK4 Brackets
- 1x IR Emitter
- 1x IR Receiver
- 1x 5-pin Phoenix Connector (analog audio) RX only
- 1x 4-Pin Phoenix Connector (RS232) RX only

mosaic

- Discrete routing of all signal flows including video, audio, USB and control signals

## NHD-400-E-TX | NHD-400-E-RX



### Key Features

- Lite' versions of the NHD-400-TX/RX with only essential I/O
- Encoding/decoding up to 4K30 4:4:4 with HDR10/HLG compatibility
- Ultra-low, single frame latency

### In the Box

- 1x NHD-400-E-TX or NHD-400-E-RX
- 1x Pair of Wall Brackets
- 1x Pair NHD-000-RACK4 Brackets
- 1x 4-pin Phoenix Connector (RS232) RX only

- NHD-400-E-RX decoder capable of 16x16 video wall processing, including mosaic
- Compatible with all other NetworkHD 400 series models

## NHD-400-DNT-TX



### Key Features

- NHD-400-TX with added 2CH Dante/AES67 network output
- Includes additional stereo audio input (switchable)
- Encoding up to 4K30 4:4:4 with HDR10/HLG compatibility

### In the Box

- 1x NHD-400-DNT-TX Encoder
- 1x 3-pin Phoenix Connector (RS232)
- 1x Pair of NHD-000-RACK4 Brackets
- 1x Pair of Wall Brackets
- 1x IR Emitter Cable
- 1x IR Receiver Cable

- Ultra-low, single frame latency
- Compatible with all other NetworkHD 400 series models

## NHD-400-TX-IW



### Key Features

- 2-Gang US style wall plate
- Dual input VGA & HDMI with auto switching
- 4K encoding up to 4K30 4:4:4 with HDR10/HLG compatibility

### In the Box

- 1x NHD-400-TX-IW Encoder
- 1x 12V DC Power Supply (US | UK | EU)
- 1x 2-Pin Terminal Block (DC Power)
- 1x 3.5mm Stereo TRS Plug to 3-pin Terminal Block RS-232 Adapter
- 1x White Decorative Plate with 4 Screws

- USB connectivity for extension and routing of USB peripheral devices
- Ultra-low, single frame latency

# NetworkHD 100/200 Series (H.264/5)

## NHD-250-RX



### In the Box

- 1x NHD-250-RX Decoder
- 1x 12V DC Power Supply (US | UK | EU)
- 3x 3-pin Phoenix Connectors (RS232 & analog audio)
- 1x Pair of NHD-000-RACK4 Brackets
- 1x Pair of Wall Brackets

### Key Features

- Multiview processor supports up to 9 unique PiP windows
- Fully customizable multiview layouts

- 4K output scaling
- Interoperable with NHD-110-TX and NHD-140-TX

## NHD-140-TX



### In the Box

- 1x NHD-140-TX Encoder
- 1x 12V DC Power Supply (US | UK | EU)
- 1x Pair of NHD-000-RACK4 Brackets

### Key Features

- Quad encoder helps reduce amount of separate components
- Combines all four inputs into a single ethernet output
- Low bandwidth H.264 1080p60 encoding

- Interoperable with NHD-110-TX/RX
- Easily rack mountable with the NHD-140-RACK-1U

## NHD-120-TX | NHD-120-RX



### In the Box

- 1x NHD-120-TX Encoder
- 2x 3-pin Terminal Block
- 2x Wall Mounting Brackets
- 2x Rack Mounting Brackets
- 1x IR Transmitter
- 1x IR Receiver
- 1x Quickstart Guide

### Key Features

- Transmits AV streams up to 4k 30Hz using H.264 or H.265 encoding
- AV streams can be encrypted using an AES 128-bit algorithm
- Compatible with the NHD-000-RACK4 for professional rack mounting of up to 12 encoders per rack
- Powers via PoE from compatible network switch using 802.1af

- Live video preview streams for use with NetworkHD Touch iPad app or a custom control UI
- Analog audio de-embed for easy connection to external audio DSP or amplifier
- Companion Control app compatible for source control

## NHD-110-TX | NHD-110-RX



### In the Box

- 1x NHD-110-TX or NHD-110-RX
- 1x IR Emitter
- 1x IR Receiver
- 2x 3-pin Phoenix Connector (RS232 & analog audio)
- 1x Pair of Wall Brackets
- 1x Pair of NHD-000-RACK4 Brackets

### Key Features

- Low bandwidth 1080p60 encoding/decoding
- Dual encoding options allow either H.264 or HEVC H.265
- Instant matrix switching with no freeze frames

- NHD-110-RX supports video wall processing up to 16x16
- Discrete routing of all signal flows including video, audio and control signals

# NHD-CTL-PRO v2 (Controller)



## In the Box

- 1x NHD-CTL-PRO v2 Controller
- 1x Pair of Rack Brackets
- 1x Power Supply (US/UK/EU/AU)
- 1x 6-pin Terminal Block

## Key Features

- Auto discovery of all NetworkHD endpoints
- Powerful web-based UI for intuitive control & management
- Isolated AV and control LAN ports for seamless integration into any network
- LED screen for access to system info
- 1U chassis for easy installation into equipment racks

# Specifications

Audio and Video				
	NHD-610-TX	NHD-610-RX	NHD-600-TRX	NHD-600-TRXF
<b>Inputs/Outputs</b>	1x HDMI 2.0 Input 1x HDMI 2.0 Loop Output 1x 5-pin Balanced analog audio In/Out	1 x HDMI 2.0 Output 1x HDMI 2.0 Switchable Input 1x 5-pin Balanced analog audio In/Out	1x HDMI 2.0 Input 1x HDMI 2.0 Output 1x 5-pin Balanced Analog Audio In/Out	1x HDMI 2.0 Input 1x HDMI 2.0 Output 1x 5-pin Balanced Analog Audio In/Out
<b>Maximum Pixel Clock</b>	600Mhz			
<b>Video Encoding</b>	SDVoE Pixel Pipeline   Dante/AES67 proprietary protocols	SDVoE Pixel Pipeline	SDVoE Pixel Pipeline	SDVoE Pixel Pipeline
<b>Encoding Data Rate</b>	1080p@60Hz 8bit - 3.4Gbps 4K UHD@30Hz 4:4:4 8bit - 6.4Gbps 4K UHD@60Hz 4:4:4 8bit - 8.7Gbps (with light compression)			
<b>Max End to End Latency</b>	Genlock Mode: Uncompressed = 30us, Compressed <120us Fast Switch Mode: 1~2 video frames = min. between 16.7 – 33.4ms @ 60fps			
<b>Max Video Resolutions</b>	4096x2160p @ 60Hz 8bit 4:4:4 or RGB 3840x2160p @ 60Hz 12bit 4:2:2 Dolby Vision 3840x2160p @ 60Hz 10bit 4:2:2 HDR10/HLG 1920x1080p @ 60Hz 12bit			
<b>Supported Standards</b>	RGB   DCI   USB			
Communication and Control				
<b>HDMI</b>	HDMI 2.0b   HDCP 2.2   CEC   EDID			
<b>Network</b>	1x 10GbE RJ45 (AV) 1x 1GbE RJ45 (LAN/Dante) <i>Dante only available on 610-TX</i>			1x 10Gbps SFP+ (AV) 10GBASE-SR: 300m OM3 MMF 1x 1GbE RJ45 (LAN)
<b>RS-232</b>	1x 3-pin Phoenix Connector   2 Way   Broadcast   Routed   API Programmable			
<b>IR</b>	1x IR TX 3.5mm TS Mono Jack   API Programmable 1x IR RX 3.5mm TRS Stereo Jack   API Programmable			
<b>USB</b>	3 x USB 2.0 Type A 1 x USB 2.0 Type B Host USB Bandwidth: 480Mbps	3 x USB 2.0 Type A 1 x USB 2.0 Type B Host USB Bandwidth: 480Mbps	3x USB 1.1 Type A 1x USB 1.1 Type B Host	3x USB 2.0 Type A 1x USB 2.0 Type B Host USB Bandwidth: 480Mbps
<b>Security Protocols</b>	AES 128   SSH   TLS   HTTPS			
<b>Power</b>				
<b>Power Supply</b>	12V 2A DC PSU   802.3at PoE+ compliant	12V 2A DC PSU   802.3at PoE+ compliant	12V 2A DC PSU   802.3at PoE+ compliant	12V 2A DC PSU
<b>Power Consumption</b>	Max: 24w   Average: 10w			
Environmental				
<b>Operating Temperature</b>	+32°F ~ +104°F (0°C ~ +45°C)   10% ~ 90% non-condensing			
<b>Storage Temperature</b>	-4°F to ~ 140°F (-20°C ~ +70°C)   10% ~ 90% non-condensing			
<b>Maximum BTU</b>	34 BTU/hr			
<b>Dimensions &amp; Weight</b>	Length x Width x Height: 215mm x 140mm x 25mm Weight: 1.75lbs			
Regulatory				
<b>Safety and Emission</b>	CE   FCC   RoHS   RCM   EAC			

# Specifications

Audio and Video				
	NHD-500-TX	NHD-500-RX	NHD-500-DNT-TX	NHD-500-IW-TX
<b>Inputs/Outputs</b>	1x HDMI In 1x 3.5mm TRS Analog In 1x 5-pin Balanced Analog Out 1x Toslink Digital Out	1x HDMI Out 1x 5-pin Balanced Analog Out 1x Toslink Digital In	1x HDMI In 1x 3.5mm TRS Analog In 1x 5-pin Balanced Analog Out 1x Toslink Digital Out	1x HDMI In 1x USB-C In 1x 3.5mm TRS Analog In
<b>Maximum Pixel Clock</b>	600Mhz			
<b>Max Video Resolutions</b>	4096x2160p @ 60Hz 8bit 4:4:4 or RGB 3840x2160p @ 60Hz 12bit 4:2:2 Dolby Vision 3840x 2160p @ 60Hz 10bit 4:2:2 HDR10/HLG 1920x1080p @60Hz 12bit			
<b>Audio Formats</b>	<b>Passthrough:</b> 2ch PCM and up to DTS:X and Dolby Atmos <b>ARC:</b> 2ch PCM and up to Dolby Digital+ and DTS 5.1 <b>Dante/AES67:</b> 2CH PCM (DNT-TX only)			
<b>Supported Standards</b>	RGB   DCI   USB 1.1, 2.0   BT.2020			
<b>Output Video Encoding</b>	JPEG 2000			
<b>Encoding Data Rate</b>	Max: 850Mbps (Configurable)			
<b>End to End Latency</b>	1 video frame latency (pass-through mode) 16ms @ 4K60   2 video frames latency (scaler/VW mode)			
Communication and Control				
<b>HDMI</b>	HDMI 2.0b   HDCP 2.2   CEC   EDID   ARC			
<b>Network</b>	1x 1GbE RJ45 1x 1Gbps SFP <b>Supported SFP Modules:</b> (1000Base-SX: 550m using OM3 multi-mode) (1000Base-LX: 5km using single-mode) (1000Base-LX10: 10km using single-mode)  1x 1GbE RJ45 Dante Out (DNT-TX only)			1x 1GbE RJ45
<b>RS-232</b>	1x 3-Pin Phoenix Connector   2-way   API Programmable			1x 3.5mm   2-way   API Programmable
<b>IR</b>	1x IR TX 3.5mm TS Mono Jack   API Programmable 1x IR RX 3.5mm TRS Stereo Jack   API Programmable			N/A
<b>USB</b>	1x USB 2.0 Type Host (Max 300Mbps upstream)	2x USB 1.1 Type A 1x USB 2.0 Type A	1x USB 2.0 Type Host (Max 300Mbps upstream)	1x USB-C Host (Up to 300Mbps upstream)
<b>Security Protocols</b>	AES 128   SSH   TLS   HTTPS			
Power				
<b>Power Supply</b>	12V DC 1A   802.3af PoE Compliant			
<b>Power Consumption</b>	Max: 15.4w   Average: 8w			
Environmental				
<b>Operating Temperature</b>	0 to + 45°C (32 to + 113 °F), 10% to 90%, non-condensing			
<b>Storage Temperature</b>	-20 to +70°C (-4 to + 158 °F), 10% to 90%, non-condensing			
<b>Maximum BTU</b>	51.18 BTU/hr			
<b>Dimensions &amp; Weight</b>	Length x Width x Height: 215mm x 120mm x 25mm Weight: 1.75lbs			2-gang US J-Box Height x Width x Depth: 121mm x 121mm x 51.4mm Weight: 1lbs
Regulatory				
<b>Safety and Emission</b>	CE   FCC   RoHS   EAC   RCM			

# Specifications

Audio and Video				
	400 Series	400-E Series	NHD-400-DNT-TX	NHD-400-TX-IW
Inputs/Outputs	<b>TX</b> 1x HDMI Input 1x HDMI Output 1x Audio In: 3.5mm (1/8in)	<b>TX</b> 1x HDMI Input	1x HDMI Input 1x Audio In: 3.5mm (1/8in) 1x IR In: 3.5mm (1/8in) 1x Audio Out: 3.5mm (1/8in)	1x HDMI Input 1x VGA Input 1x Audio In: 3.5mm (1/8in)
	<b>RX</b> 1x HDMI Output 1x Audio Out: 5-Pin Phoenix	<b>RX</b> 1x HDMI Output		
Maximum Pixel Clock	300MHz			
Output Video Encoding	JPEG 2000			
Encoding Data Rate	Max: 850Mbps (Configurable)			
Max End to End Latency	1 video frame latency (pass-through mode) 16ms @60fps   2 video frames latency (scaler/VW mode)			
Max Video Resolutions	3840x2160p @ 60Hz 8bit 4:2:0 3840x2160p @ 30Hz 8bit 4:4:4 or RGB 3840x2160p @ 30Hz 10bit 4:2:2 HDR/HLG 1920x1080p @ 60Hz 12bit			
Communication and Control				
HDMI	HDMI 2.0   HDCP 2.2   CEC   EDID			
Ethernet	1x 1GbE 8-pin RJ-45			
RS-232	1x RS-232: 4-pin Phoenix (RX only)		1x RS-232: 3-pin Phoenix	1x RS-232: 3.5mm (1/8in) TRS Stereo   2 Way
IR	1x IR TX: 3.5mm TS Mono 1x IR RX: 3.5mm TRS Stereo Bidirectional Over Ethernet	N/A	1x IR TX: 3.5mm TS Mono 1x IR RX: 3.5mm TRS Stereo Bidirectional Over Ethernet	N/A
USB	RX: 2x USB Device: USB Type A   TX: 1x USB Host: USB Type B   Power: 5v 500ma per port   Data Rate: Max 9MB/s	N/A	1x USB Host: USB Type B Data Rate: Max 9MB/s	1x USB Host: USB Type B Data Rate: Max 9MB/s
Security Protocols	AES 128   SSH   TLS   HTTPS			
Power				
Power Supply	12V DC			
PoE	IEEE 802.3af			
Power Consumption	8W			
Environmental				
Operating Temperature	0 to + 45°C (32 to + 113 °F), 10% to 90%, non-condensing			
Storage Temperature	-20 to +70°C (-4 to + 158 °F), 10% to 90%, non-condensing			
Maximum BTU	51.18 BTU/hr			19.45 BTU/hr
Dimensions & Weight	Length x Width x Height: 220mm x 140mm x 25mm Weight: 1.75lbs			2-gang US J-Box H x W x D: 108mm x 91mm x 45mm Weight: 1lbs
Regulatory				
Safety and Emission	CE   FCC   RoHS   EAC   RCM			



# Specifications

Audio and Video		
	NHD-250-RX	NHD-140-TX
<b>Inputs/Outputs</b>	1x HDMI Output 1x Audio Out: 3-Pin Phoenix	4x HDMI Input
<b>Output Video Encoding</b>	N/A	H.264
<b>Encoding Data Rate</b>	N/A	120Mbps (30Mbps per encoder)
<b>Max End to End Latency</b>	~80ms (low latency mode) ~300ms (high quality mode)	
<b>Max Video Resolutions</b>	3840x2160p @60Hz (Tile mode) 1920x1080p @60Hz	1920x1080p @60Hz 8bit
Communication and Control		
<b>HDMI</b>	HDMI 1.4   HDCP 1.4   CEC	HDMI 1.4   HDCP 1.4
<b>Ethernet</b>	1x 1GbE 8-pin RJ-45	
<b>RS-232</b>	1x RS-232: 3-pin Phoenix   Routed   API Programmable	N/A
<b>IR</b>	N/A	N/A
<b>Security Protocols</b>	AES 128   SSH   TLS   HTTPS	
Power		
<b>Power Supply</b>	12V DC	
<b>PoE</b>	IEEE 802.3af	N/A
<b>Power Consumption</b>	8.3W	19.44W
Environmental		
<b>Operating Temperature</b>	0 to + 45°C (32 to + 113 °F), 10% to 90%, non-condensing	
<b>Storage Temperature</b>	-20 to +70°C (-4 to + 158 °F), 10% to 90%, non-condensing	
<b>Maximum BTU</b>	31 BTU/hr	68 BTU/hr
<b>Dimensions &amp; Weight</b>	L x W x H: 220mm x 140mm x 25mm Weight: 1.75lbs	L x W x H: 260mm x 210mm x 25mm Weight: 2.25lbs
Regulatory		
<b>Safety and Emission</b>	CE   FCC   RoHS   EAC   RCM	

# Specifications

Audio and Video				
	NHD-150-RX	NHD-124-TX	NHD-120 Series	NHD-110 Series
Inputs/Outputs	1x 8-pin RJ-45 female Input 1x HDMI Output 1x Audio Out: 3-Pin Phoenix	4x HDMI Input 1x 8-pin RJ-45 female Output	<b>TX</b> 1x HDMI Input 1x Audio Out: 3-Pin Phoenix	<b>TX</b> 1x HDMI Input 1x Audio Out: 3-Pin Phoenix
			<b>RX</b> 1x 8-pin RJ-45 female 1x HDMI Output 1x Audio Out: 3-Pin Phoenix	<b>RX</b> 1x HDMI Output 1x Audio Out: 3-Pin Phoenix
Output Video Encoding	H.264/H.265	H.264/H.265	H.264/H.265	H.264/H.265
Encoding Data Rate	H.264: 30Mbps   H.265: 5Mbps	H.264: 30Mbps   H.265: 5Mbps	H.264: 30Mbps   H.265: 5Mbps	H.264: 30Mbps   H.265: 5Mbps
Max End to End Latency	<b>1080p</b> LLM: 80ms   HQM: 250ms <b>4K</b> LLM: 150ms   HQM: 400ms	<b>1080p</b> LLM: 80ms   HQM: 250ms <b>4K</b> LLM: 150ms   HQM: 400ms	<b>1080p</b> LLM: 80ms   HQM: 250ms <b>4K</b> LLM: 150ms   HQM: 300ms	LLM: ~80ms HQM: ~300ms
Max Video Resolutions	1920x1080p @ 60Hz 3840x2160p @ 60Hz	1920x1080p @ 60Hz 3840x2160p @ 30Hz	1920x1080p @ 60Hz 3840x2160p @ 30Hz 4:2:0 8bit	1920x1080p @60Hz 8bit
Communication and Control				
HDMI	HDMI 1.4   HDCP 2.2   EDID   CEC	HDMI 1.4   HDCP 2.2   EDID	HDMI 1.4   HDCP 2.2   EDID   CEC	HDMI 1.4   HDCP 1.4   CEC
Ethernet	1x 8-pin RJ-45 female   10/100Base-T   PoE 802.1af	1x 8-pin RJ-45 female   10/100Base-T	1x 8-pin RJ-45 female   10/100Base-T   PoE 802.1af	1x 8-pin RJ-45 female   10/100Base-T   PoE 802.1af
RS-232	1x RS-232: 3-pin Phoenix   API Control	N/A	1x RS-232: 3-pin Phoenix   API Control	1x RS-232: 3-pin Phoenix   Routed   API Programmable
IR	N/A		1x IR TX: 3.5mm TS Mono 1x IR RX: 3.5mm TRS Stereo Routed   API Programmable	1x IR TX: 3.5mm TS Mono 1x IR RX: 3.5mm TRS Stereo Routed   API Programmable
Security Protocols	AES 128   SSH   TLS   HTTPS			
Power				
Power Supply	12V DC 1A	12V DC 1A	12V DC 1A	12V DC 1A
PoE	IEEE 802.3af	N/A	IEEE 802.3af	IEEE 802.3af
Power Consumption	3.6W	3.6W	3.6W	6W
Environmental				
Operating Temperature	0 to + 45°C (32 to + 113 °F), 10% to 90%, non-condensing			
Storage Temperature	-20 to +70°C (-4 to + 158 °F), 10% to 90%, non-condensing			
Maximum BTU			20.47 BTU/hr	20.47 BTU/hr
Dimensions & Weight	L x W x H: 220mm x 130mm x 25mm Weight: 1.25lbs	L x W x H: 260mm x 215mm x 25mm Weight: 3.21lbs	L x W x H: 175mm x 100mm x 25mm Weight: 1.25lbs	L x W x H: 175mm x 100mm x 25mm Weight: 1.25lbs
Regulatory				
Safety and Emission	CE   FCC   RoHS   EAC   RCM			

	NHD-CTL-PRO v2	NHD-000-CTL
Communication and Control		
Network	2x 1GbE RJ45 (Control & AV)	2x 1GbE RJ45 (Control & AV)
RS-232	1x RS-232 6-Pin Phoenix Connector	
HDMI	Reserved for future use	N/A
USB	Reserved for future use	N/A
Security Protocols	Telnet   Telnet over TLS   SSH   HTTPS	
Power		
Power Supply	12V DC 1A	12V DC 1A
PoE	802.3af PoE Compliant	
Power Consumption	N/A	Max: 15.4w   Average: 5w
Environmental		
Operating Temperature	0 to + 45°C (32 to + 113 °F), 10% to 90%, non-condensing	
Storage Temperature	-20 to +70°C (-4 to + 158 °F), 10% to 90%, non-condensing	
Maximum BTU	N/A	20 BTU/hr
Dimensions & Weight	Length x Width x Height: 215mm x 120mm x 25mm Weight: N/A	Length x Width x Height: 140mm x 90mm x 25mm Weight: 1lbs
Regulatory		
Safety and Emission	CE   FCC   RoHS   EAC   RCM	