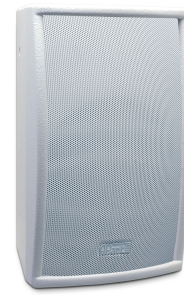


# MASK8F-W

8" two-way full range loudspeaker,  
white



The Apart MASK8F is a robust 8" two-way full range low impedance loudspeaker with timeless design suited for background music up to 'dance level' music. This wooden cabinet loudspeaker is especially designed to produce a full hi-fi sound at a higher power level without using a subwoofer.

MASK8F has a very powerful 8" coated paper cone woofer. Together with the Ferro-fluid cooled silk dome tweeter on a Waveguide horn, this results in a high SPL, an ultra low distortion and a sound that comes close to studio monitor quality. The built-in Auto-Reset 2-step Protection Guard together with the quality components makes MASK8F a fail-safe loudspeaker, even at high power loads! After mounting the bracket on the wall, the sleeve in the bracket makes it quite easy and safe to fix the MASK8F loudspeakers, even in uncomfortable positions.

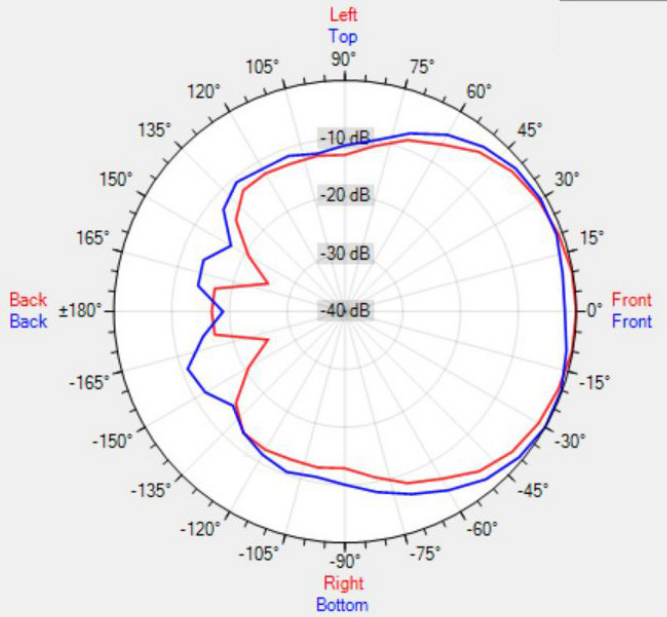
The cabinet has several thread mounting points tapped at the back, the top and side of the cabinet. This way the cabinet can be rigged or mounting clamps can be used. An extra contractor advantage! MASK8F is delivered with a metal U-Mounting bracket.

## TECHNICAL SPECIFICATIONS

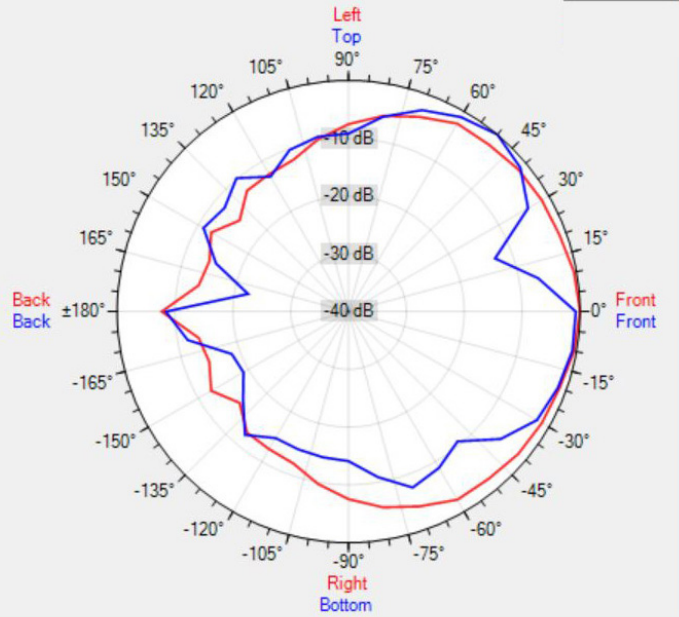
height in mm	411	width in mm	250
depth in mm	250	loudspeaker system	2-way
woofer size in inch	8	woofer cone material	paper
tweeter size in inch	1	mounting system	U-bracket
colour	black / white	impedance (ohms)	8
low impedance dynamic power in watts	300	low impedance RMS power in watts	200
SPL 1W/1m in dB	90	max SPL 1m in dB	112
frequency response in Hz	50 - 25K	main construction material	mdf wood
grille main material	steel	IP rating	
Horizontal dispersion angle 1000 Hz	150°	Vertical dispersion angle 1000 Hz	160°
closest RAL colour (subject to deviations)	RAL9003 (W) / RAL9011 (BL)	Net weight product (kg)	9,75

## POLAR PLOTS

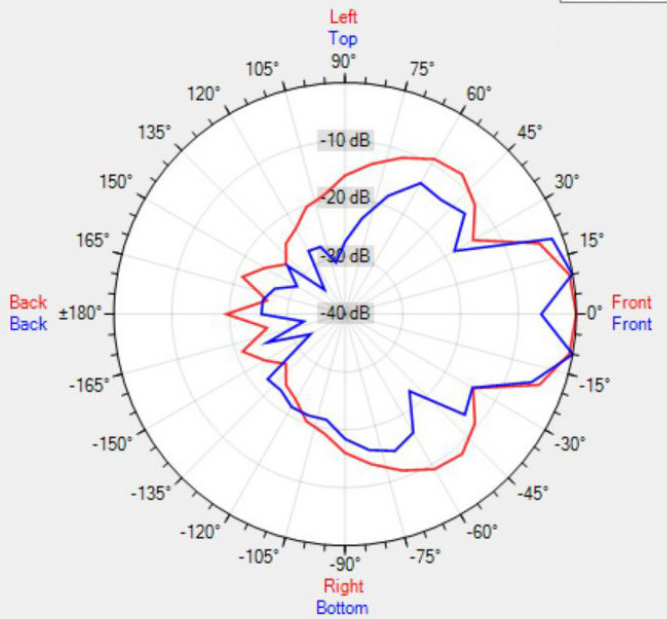
Data Shown: MASK8F (Apart Audio)  
Display Parameters: Frequency: 1000Hz (1/24th Octave)



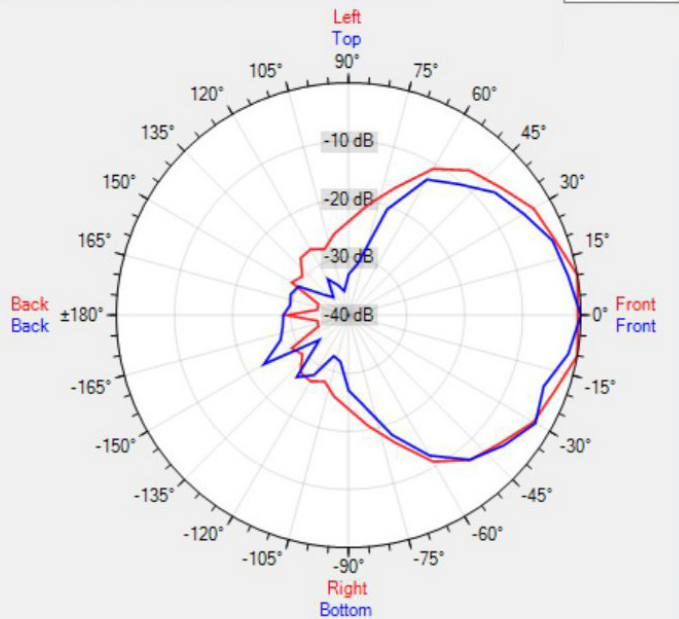
Data Shown: MASK8F (Apart Audio)  
Display Parameters: Frequency: 2000Hz (1/24th Octave)



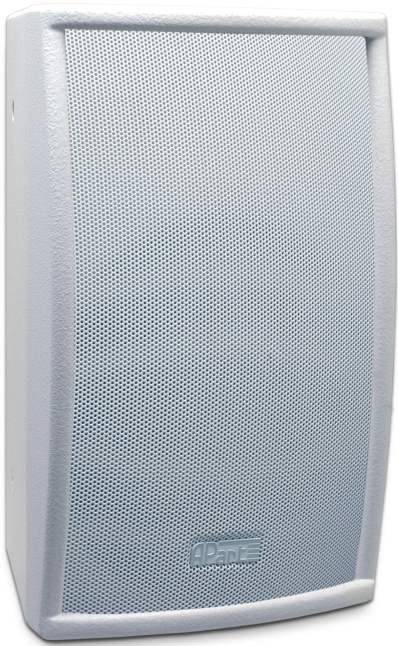
Data Shown: MASK8F (Apart Audio)  
Display Parameters: Frequency: 4000Hz (1/24th Octave)



Data Shown: MASK8F (Apart Audio)  
Display Parameters: Frequency: 8000Hz (1/24th Octave)



MORE PICTURES



## ACCESSORIES



**STT**

T-adapter for 2 MASK8 on one pole



**STSUB**

Pole stand for MASK8 onto Sub with pole adapter



**STFLOOR**

Floorstand for speaker with pole adapter