

Abyen
Trusted LED Supplier

**GET THE BEST OF
BOTH WORLDS**



ACCLAIM Plus Series
A2712/A2715/A2719/A2725/A2738



Nordeo

Ut Exit




Get the best of both worlds

The Acclaim Plus series offer the flexibility and performance to design the signage solution of your dreams, creating the ultimate seamless digital art. The Acclaim Plus series can be wall mounted, hung or stacked from the floor. It can be built in a vast variety of shapes and sizes and is compatible with most media players. The Acclaim Plus series are not only one of the most versatile video solutions on the market but provides picture perfect bezel free video display to take your message to the next level.

LCD benefits

-  Easy Installation and Set Up
-  Plug and Play
-  Standard 55" Size
-  Standard Video Inputs
-  "Box Moving" Distribution Concept
-  Easy to Stock

LED benefits

-  Bezel Free
-  Color Uniformity
-  Greater Visual Impact
-  High Brightness
-  Easy Maintenance
-  Flexible Configuration

With Absen Acclaim Plus series, you get the best of both worlds.

ACCLAIM PLUS SERIES



Standard 27.5" Size
HD & 4K Pixel to Pixel Resolution



Front Install/Service



≤9 cm Wall Mount
EasyMount Kit



Outstanding Image Quality
CrystalView Technology



Standard Video Input
HDMI-Direct

1 Attracts Visitors

- High Brightness
- High Contrast
- Higher Color Accuracy

- Standard 16:9 Size
Pixel to Pixel 4K & HD Resolutions
- *HDMI-Direct* Technology
- VESA Compatible
- *EasyMount* Kit (≤9 cm Thickness)
- Front Install
- Multi-Type Install

2 Ease of Use

3 Bezel Free Duo-Die-Cast Technology

4 Flexibility and Creative Possibility

- Flexibility
- Endless Creative Possibilities

6

Simple Maintenance

- Magnetic Front Service Technology
- NPP *MatteSnapMask* Technology
- *SlideTrack* Technology

5 Uniformity Over Time

- A3C+ Color Calibration, 100,000
Hours of Operation

Powered by Absen

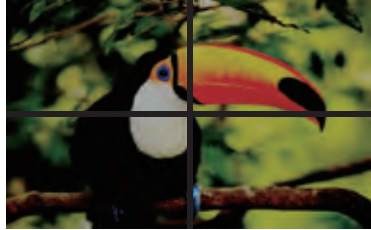


Attract Visitors



s

High Brightness



LCD Screen



LED Screen

High Contrast



Low Contrast



High Contrast

Higher Color Accuracy

CrystalView Technology

An LED can display more details with more vivid images and richer color than a normal LCD. This is because LED display can enrich the color layering to enhance the details. But traditionally even on LED as one decreased the brightness the greyscale also decreased leaving images flat at low brightness levels. The Acclaim Plus series use a premium chip which with PWM that can maintain complete detail and high contrast ratio and achieve high greyscale even at low brightness levels. This allows a natural and smooth color gradient and superior image accuracy at almost any brightness setting and room condition. So, no matter the location, the Acclaim Plus will always look outstanding!



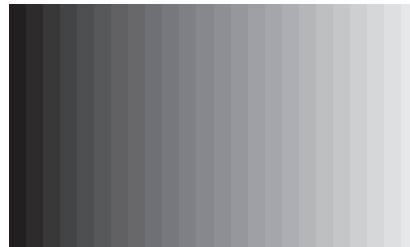
Clear Textures in Shadows



Lost Details in Shadows



Smooth Transition of the Gray Scale
in the Acclaim Plus series



Unsmooth Transition of The Gray Scale

Arrivals Information

Flight	Origin	Time	Status
EZ1222	Alicante	13:55	Estimated 13:57
W63305	Warsaw-Chopin	14:00	Landed 13:30
EZ1212	Krakov	14:25	Landed 14:29
EZ1296	Brussels-Midi	14:30	Landed 14:37
EZ1284	Amsterdam	14:50	Landed 14:43
W6448	Athens	15:25	Estimated 15:59
EZ1028	Lisbon-Porto-Ancage	16:05	Estimated 15:44
EZ1092	Marseille	16:20	Estimated 16:58
EZ1216	Dortmund	16:25	Estimated 16:30
EZ1264	Berlin	16:25	Estimated 16:28
W63009	Bucharest-Orange	16:40	Estimated 16:52
FR3467	Katowice	16:45	Estimated 16:21
W63307	Warsaw-Chopin	16:45	Estimated 17:27
EZ1098	Geneva	16:50	Estimated 16:36
W64490	Lisbon	16:55	Estimated 16:43
EZ1149	Aberdeen	17:00	Estimated 16:57
W61207	Budapest	17:00	Estimated 16:51
FR337	Dublin	17:35	Estimated 17:10
W64576	Athens	17:25	Estimated 17:25
EZ1282	Vilnius	17:30	Estimated 17:18
EZ1185	Berlin	17:40	Estimated 17:39
EZ1062	Geneva	17:55	Estimated 18:00
EZ1265	Amsterdam	18:00	Estimated 17:47
EZ1068	Glasgow	18:05	Estimated 17:57
EZ1084	Tel Aviv	18:45	Estimated 18:06
W63065	Lublin	18:45	Estimated 18:37
VY8405	Amsterdam	19:00	Estimated 22:10
W63771	Slobo	19:05	
W63303	Chişinău	19:10	
W61309	Warsaw-Chopin	19:20	
EZ1028	Edinburgh	19:25	

Passenger Information

Travel Information

Please visit our travel centre for tickets and free train, bus, traffic, and car park information near the arrivals entrance.

While you wait
Don't forget to visit our shops for food and drink options while you wait unaccompanied items

Please do not leave any item unattended. Unattended items will be removed by Police.



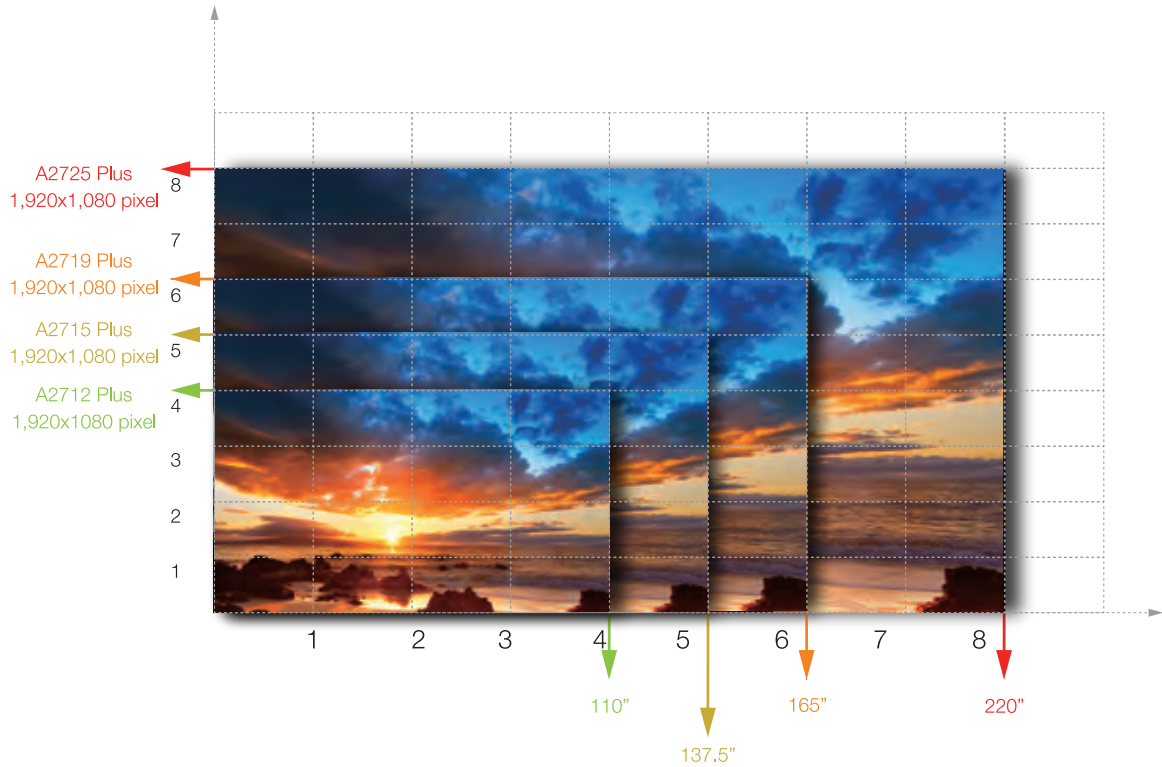
LED professionals in the AV industry are already aware of the benefit of using LED technology; the ease-of-use from installation to operation and maintenance. But the connection between LCD for business and TVs at home have made it seem simpler. That is no longer true. If you can manage LCD, you can easily master Acclaim Plus series. It is a user-friendly product that uses standard

sizes, resolutions, video inputs and VESA mounts. Offering even greater flexibility and options for installation the Acclaim Plus performs better with less effort than LCD.

Ease of Use

Standard 16:9 Size

Pixel to Pixel 4K & HD Resolutions



HDMI-Direct Technology

Directly plug HDMI into the panels without the need for traditional LED data cables and sending boxes. Acclaim Plus Direct HDMI inputs make installation faster, simpler and performance even more stable.

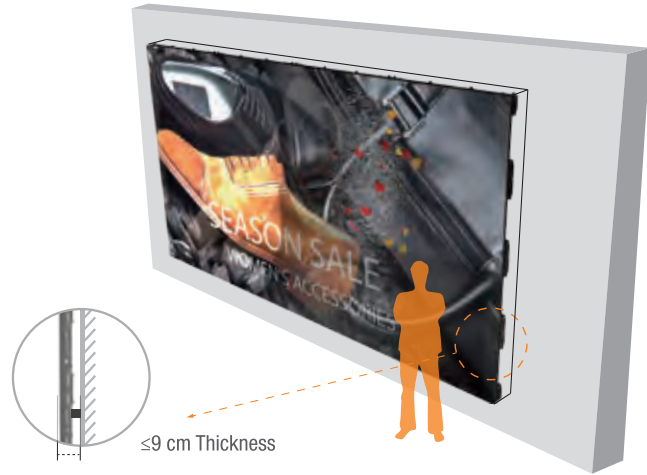


Acclaim plus series

EasyMount Kit

Special wall mount allows self-location.

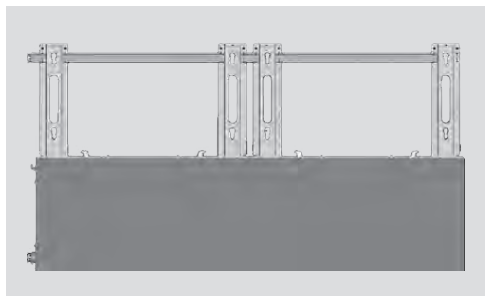
When we fixed first wall mount, the rest of others can be fixed directly without any tool's assistance. The four corners of panel have special location pin which can match wall mount. Also with panel "fast lock", quick installation is absolutely achievable in front maintenance. Thickness of whole structure is only 9 cm, saving installation space.



Front Install

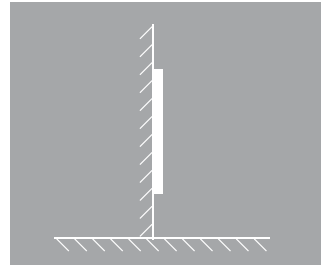
Installing a video wall in public space can be very difficult, especially in retail stores. For these tough spaces or anytime the screen will be mounted without rear access a 100% front installation is needed. Fortunately, the Acclaim is fully front mountable.

The *EasyMount* Kit can be installed directly on the wall. Once the mounting kit is assembled just remove the modules from the frame, mount the panels to the kit, align the panels and put the modules back on. The process is simple, quick and avoids damaging the LEDs on the module.

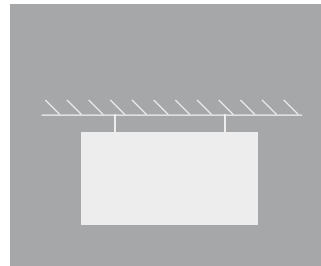


Multi-Type Install

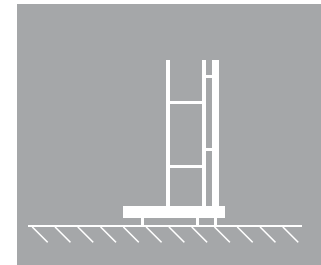
The Acclaim Plus can be mounted in almost any situation. Whether wall mounted with our EasyMount Kit, a VESA mount, rigged on a truss, or installed on a floor stacking system, the Acclaim goes up in a snap.



Wall Mount



Rigging



Stacking



Bezel Free

LED panels are frameless, meaning that any LED installation is completely seamless. The result is one complete display, as if the screen were one enormous panel. There are no bezels between panels as is found in LCD applications.

Duo-Die-Cast Technology

The Acclaim Plus is built with CNC machined “Duo-Die-Cast Technology”, with vertical and horizontal side locks. These locks hold the panels together into one without external structure and force.



Acclaim Plus Series Module



Acclaim Plus Series Structure



Flexibility and Creative Possibility

Because LED screens are modular, they can be made into many more size variations than other display systems. So the screen can fit to the dimensions of the space instead of needing the space to fit the screen.

Also, on site there are often surprises, such as walls not being exactly the expected size, or ceilings being lower than planned, and LED products can adapt well to these variations.

Flexibility

Because LED screens are modular, they can be made into many more size variations than other display systems. So the screen can fit to the dimensions of the space instead of needing the space to fit the screen.

Also, on site there are often surprises, such as walls not being exactly the expected size, or ceilings being lower than planned, and LED products can adapt well to these variations.



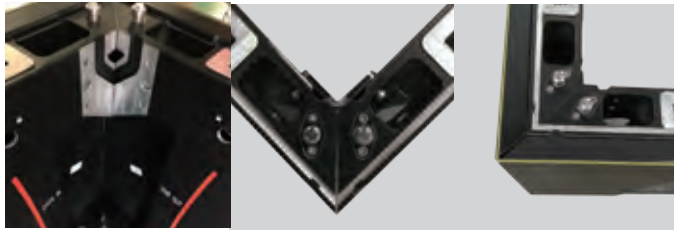
LED Screen



LCD Screen

Endless Creative Possibilities

LED screen modularity and software configuration makes it easy to be creative with the physical installation. Screens are not limited to being rectangular 16:9 proportions. LED screens can be any size or shape, limited only by the module size and your imagination! It 's important to remember to use specific creative content built for these creative applications for best results.



The Acclaim Plus series



A2715 Terminal 3, Jakarta airport,
Indonesia



Powered by Absen



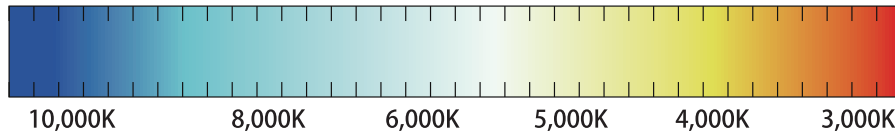
Uniformity Over Time

Both LCD and LEDs lose brightness over the life of the product. In LCDs this loss happens differently across screens leading to a patching, color variations and an overall displeasing appearance. Good LED displays do not lose color uniformity and the brightness loss happens uniformly across the screen. So the loss is not apparent to the viewer and the vivid picture continues to amaze over time.

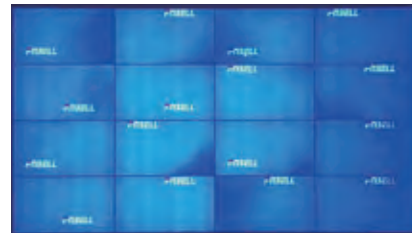


A3C+

Absen 3rd Generation Calibration Technology with Auto-Upload Feature



Allows for color temperature adjustments between 3,000K-9,500K to adapt to different circumstances and application requirements.



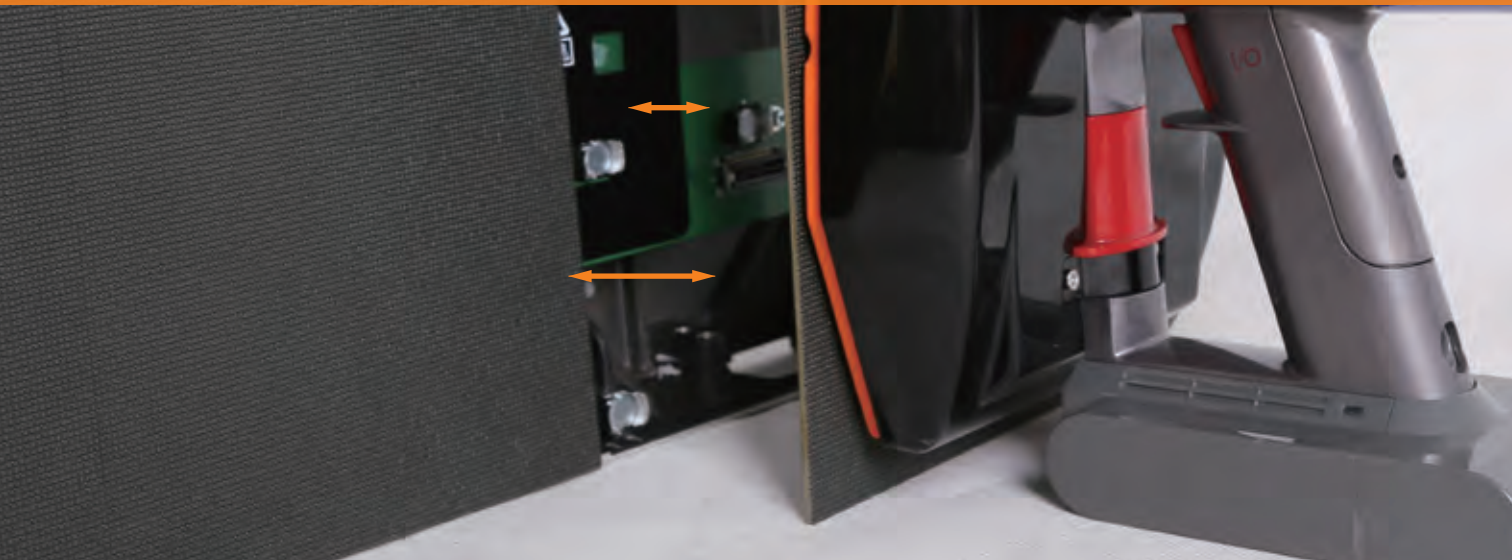
After 1 year usage:
Keeps great color uniformity over time.

After 1 year usage:
Colors deteriorate over time.



Simple to Service

Over the years of use there are times when the screen will need to be repaired. LED video walls can usually be easily fixed by substituting components with quick to install swappable spare parts.



Magnetic Front Service Tool

Use the magnetic service tool to quickly pull of modules from the front.



SlideTrack Technology

When connecting a module to the frame the ***SlideTrack*** allows the module to ease into place and snap to connect. Makes installation a snap and also protects the LEDs from damage.

Product Solution



Accessories

General Accessories

Sending Box (For standard version)

It is used to send display signals.



Front



Back



Short Power Cable

Used to connect panels



Long Power Cable

Used to connect the distribution box to panels



Short Network Cable

(For standard version)

Used to connect signals between panels



Long Network Cable

(For standard version)

Used to connect the sending box to panels



Short HDMI Cable

(For smart version)

Used to connect panels



Long HDMI Cable

(For smart version)

Used to connect video player to panels



Installation Tools



Front Service Tools



CreativeDesign Kit



Case & Protection

Optional Accessories

Video processor

It provides multi-channel signal input interfaces. Any signal can be selected to be output to the screen or processed by relevant image processing technology.



Splicer

It is used to control ultra-large screens with ultra-large resolutions.



Software



Ai-Box

Used to set the display screen through the mobile phone, even the screen brightness adjustment, etc.



Rigging Kit



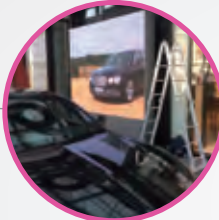
EasyMount Kit
(Mounting bracket, screws)



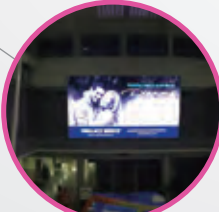
Applications



Retail



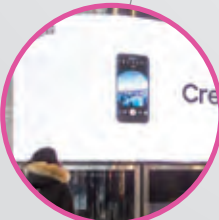
Car Dealers



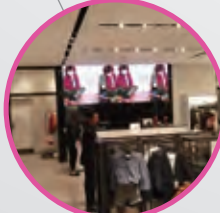
Supermarkets



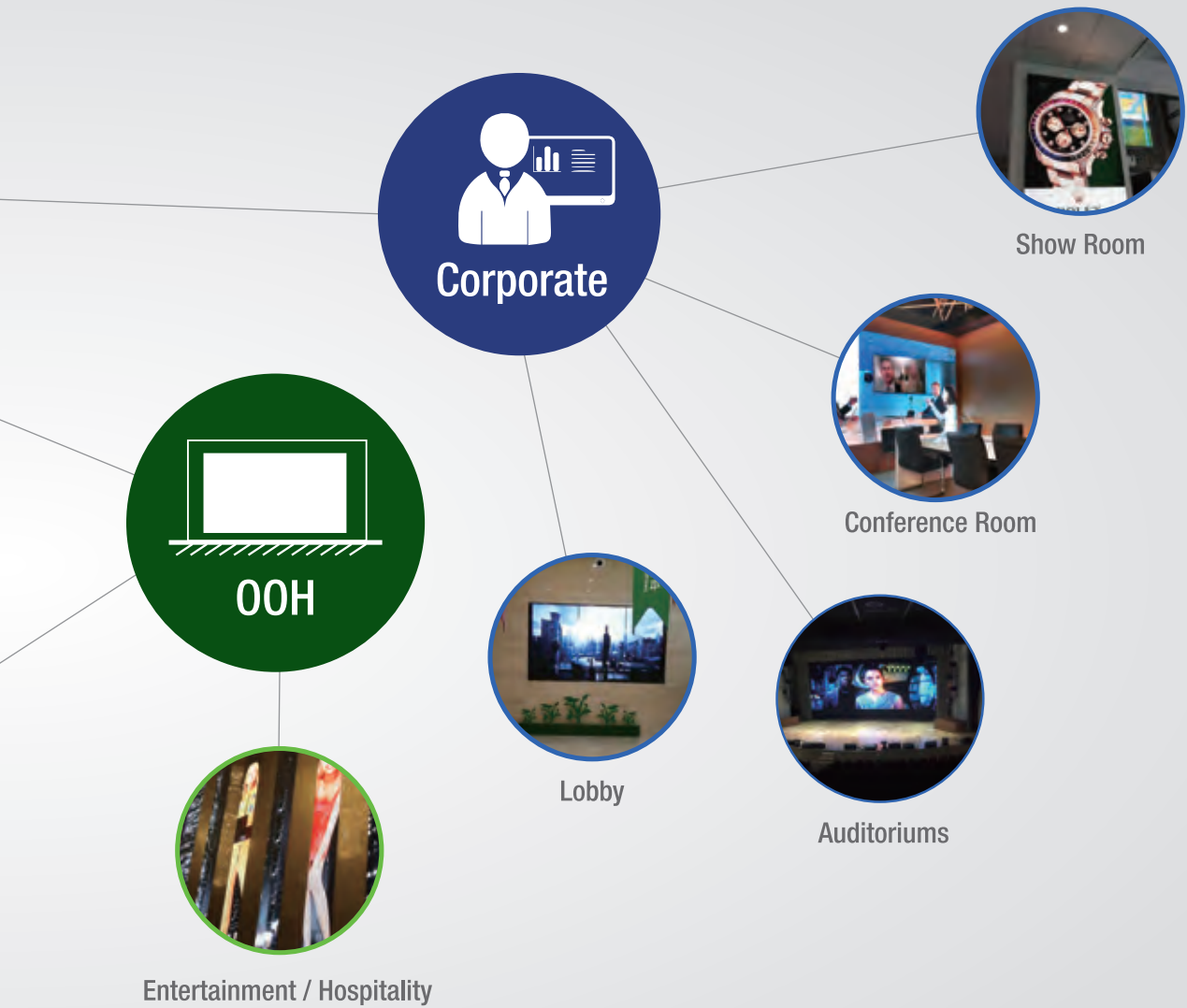
Transportation



Consumer Electronic Stores



Fashion Stores



Parameters

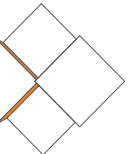
		A2712 Plus	A2715 Plus	A2719 Plus
Display	LED Type	Black SMD1010	Black SMD1010	Black SMD1415
	Pixel Pitch	1.27 mm	1.58 mm	1.9 mm
	Panel Size	27.5"		
	Panel Dimension	610 x 343 x 49 mm (24.01" x 13.51" x 1.93") (W x H x D)		
	Resolution	480 x 270 (16:9)	384 x 216 (16:9)	320 x 180 (16:9)
	Product Weight	6 kg (13.23 lb)	6 kg (13.23 lb)	6 kg (13.23 lb)
	Panel Material	Die casting Aluminum		
	Brightness	600 nit	600 nit	800 nit
	Refresh Rate	1,920/3,840 Hz (optional)		
	Color Gamut	110% NTSC		
	Contrast Ratio	3,000:1	4,000:1	4,000:1
	Viewing Angle (Horizontal/Vertical)	160/140 deg.	160/140 deg.	140/110 deg.
Connectivity	Input	HDMI (Smart Version) / RJ45 (Standard Vesion)		
	Output	HDMI (Smart Version) / RJ45 (Standard Vesion)		
	External Control	USB, RJ45		
	External Sensor	WiFi, Bluetooth (With aiBox)		
Power	Power Supply	AC 100 - 240 V~ (+/- 10 %), 50/60 Hz		
	Power Consumption (Max/Typical)	630/210 W/m ²	610/203 W/m ²	450/150 W/m ²
Environmental Conditions	IP Rating(Front/Rear):	IP40/IP21, IP40/IP30 (optional)		
	Operating Humidity	10%~85%		
	Operating Environment	Indoor		

A2712 Plus/ A2715 Plus/ A2719 Plus

Features	Special	HDMI Chain Supporting FHD Resolution , RJ45 Chain maximum Supporting 655360 pixel
		Software Support (Screen configuration, brightness adjust, color temperature adjust, signal Switching & Recovery)
	Internal Media Player	N/A
	VESA Standard Wall Mount	600 x 400 mm (Need customization panel)
	Absen Wall Mounting Bracket	1 x 1 Panel, 1 x 2 Panel
Bezel	Bezel Width	No Bezel
Rigging	Rigging Quantity (Vertical)	10 PCS
Accessories	Included	Quick Setup Guide, Warranty Card, Application U Disk, Signal Cable, Power Cord , module maintenance tool
	Optional Mount	VESA 600 x 400 mm (Need customization panel, and screen size less than 110")
	Optional Absen Wall Mounting	1 x 1 Panel, 1 x 2 Panel
	Optional Rigging Bar	Single panel width, Double panel width
	Optional Stacking System	According to screen size (Need customization panel)
Green Management	Emission Standard	EMC
	RoHS Compliant	Yes
	Certification	TUV-CE/ETL/FCC/CCC/RoHS
Service	Service mode	Front
	Standard Warranty	2 Years (Parts / Labor / Repair)

★ Shenzhen Absen Optoelectronic Co., Ltd. reserves the right to modify product design, specifications, and parameters without further notice.
 Photos are used for illustration purpose only as products may differ from these photos. All rights reserved by Shenzhen Absen Optoelectronic Co., Ltd.

June. 2019



Shenzhen Absen Optoelectronic Co.,Ltd

18-20F Building 3A, Cloud Park, Bantian Huawei Base,
Longgang District Shenzhen, 518129, P.R.China
T: +86-755-89747399 E: absen@absen.com
F: +86-755-89747599 W: www.absen.com

Absen Inc.

7120 Lake Ellenor Drive Orlando,
Florida 32809, USA
T: +1-407-203-8870 E: info@usabsen.com
F: +1-407-203-8873 W: www.usabsen.com

Absen GmbH

Eisenstraße 5, 65428 Rüsselsheim a.M.,
Germany
T: +49 (0) 6142 78935-0 E: europe@absen.com
F: +49 (0) 6142 78935-29 W: www.absen-europe.com