

DTP2 T 202 FB

TWO INPUT 4K/60 DTP2 TRANSMITTER
FOR FLOOR BOXES



18 Gbps
4K/60 4:4:4

DTP
SYSTEMS

The Extron DTP2 T 202 FB is a two-input transmitter that sends DisplayPort or HDMI, audio, and control up to 330 feet (100 meters) over a shielded CATx cable to Extron DTP®-enabled products. It is compatible with floor boxes from OBO Bettermann, MK by Honeywell, Electraplan, and PUK. The unique form factor of the DTP2 T 202 FB transmitter provides a flexible, floor box mounting solution, offering convenient input locations and system design flexibility for DTP Systems.

- ▶ Designed to mount in a variety of floor boxes
- ▶ Transmits DisplayPort, HDMI, control, and analog audio up to 330 feet (100 meters) over a shielded CATx cable
- ▶ Supports computer and video resolutions up to 4K/60 @ 4:4:4
- ▶ Auto-switching between inputs
- ▶ Analog stereo audio embedding
- ▶ Supports DisplayPort SST - Single Stream Transport data rates up to 21.6 Gbps
- ▶ Supported HDMI 2.0b specification features include data rates up to 18 Gbps, HDR, Deep Color up to 12-bit, 3D, and HD lossless audio formats
- ▶ Support for HDR – High Dynamic Range video
- ▶ HDCP 2.2 compliant
- ▶ Remote power capability

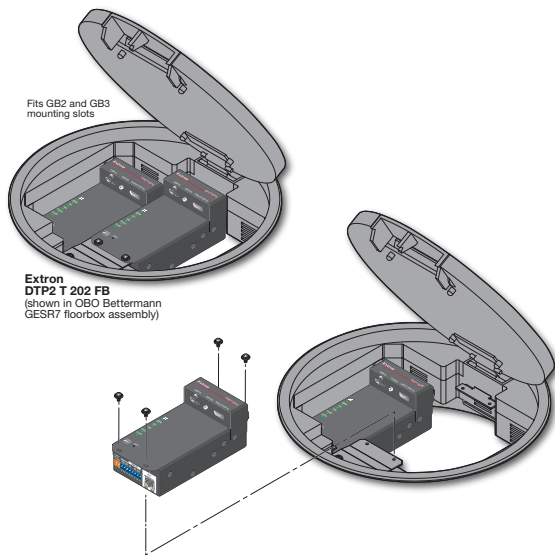
DESCRIPTION

The **DTP2 T 202 FB** is a two-input DTP transmitter that sends DisplayPort or HDMI, audio, and control up to 330 feet (100 meters) over a shielded CATx cable. Its unique form factor provides a flexible floor box mounting solution that is compatible with offerings from OBO Bettermann, MK by Honeywell, Electraplan, and PUK. The DTP2 T 202 FB supports video resolutions up to 4K/60 at 4:4:4 chroma sampling, and complies with HDCP 2.2. It features analog stereo audio embedding plus automatic switching between inputs for easy operation in unmanaged locations. Designed for DTP® Systems, the DTP2 T 202 FB transmitter is compatible with all DTP-enabled products and supports remote power for simplified installation.

The DTP2 T 202 FB provides reliable switching and transmission of DisplayPort or HDMI video at data rates up to 18 Gbps, along with support for HDR, Deep Color up to 12-bit, 3D, and embedded HD lossless audio formats. For simplified operation, it can automatically switch between the sources and the DTP2 output can be configured to send video and embedded audio, plus bidirectional RS-232 and IR signals, to an HDBaseT™-enabled display. DDC communication of EDID and HDCP is continuously maintained between source and display, ensuring direct compatibility and optimal signal transmission between devices. Support of 4K/60 at 4:4:4 color sampling requires connection to a matching DTP2 product.

Other convenient features are designed to help simplify installation. The DTP2 T 202 FB supports simultaneous transmission of bidirectional RS-232 and IR signals from a control system for AV device control. Also, it can be remotely powered over the shielded twisted pair cable by a DTP2-enabled product or configured to provide power to the connected DTP2 receiver.

APPLICATION DIAGRAM



SPECIFICATIONS

TRUE 4K SPECIFICATION

Max 4K Capabilities		
Resolution and Refresh Rate	Chroma Sampling	Max Bit Depth per Color
4096 x 2160 at 60 Hz 3840 x 2160 at 60 Hz 4096 x 2160 at 30 Hz 3840 x 2160 at 30 Hz	4:4:4	8 bit
4096 x 2160 at 60 Hz 3840 x 2160 at 60 Hz	4:2:0	12 bit
Frame rate¹	24, 25, 30, 50, or 60 fps	
Chroma sampling¹	4:4:4, 4:2:2, or 4:2:0	
Color bit depth¹	8, 10, or 12 bits per color	
Signal type	HDMI 2.0b; HDCP 2.2	
Max. video data rate	18 Gbps (6 Gbps per color)	
NOTE: ¹ Subject to the maximum data rate limit. Use our calculator at www.extron.com/4Kdata to determine video parameters supported by this data rate.		

VIDEO INPUT – HDMI		
Connectors	1 female HDMI type A	
VIDEO INPUT – DISPLAYPORT		
Connectors	1 female 20-pin DisplayPort	
INTERCONNECTION BETWEEN TRANSMITTER AND RECEIVER		
Connector	1 female RJ-45 per unit	
Transmission distance	Up to 330' (100 m) using shielded twisted pair cable or XTP DTP 24 STP cable	
Cable requirements	Solid conductor, 24 AWG or better	
Cable recommendations	400 MHz bandwidth, STP (shielded twisted pair)	
NOTE: Extron XTP DTP 24 shielded twisted pair cable is strongly recommended for optimal performance.		
ANALOG AUDIO INPUT		
Number/signal type	1 analog stereo, unbalanced 2 digital audio, embedded on the HDMI and DP	
CONTROL/REMOTE		
external device (pass-through, unidirectional or bidirectional)		
Serial control port	1 RS-232, 3.5 mm captive screw connector, 3-pole, rear panel	
USB control port	1 female mini USB type B, front panel	
USB standards	USB 2.0 high speed	
Program control	Extron Simple Instruction Set (SIS™)	
GENERAL		
Power supply	External Input: 100 to 240 VAC, 50-60 Hz Output: 12 VDC, 1.5 A, 18 watts	
Everlast power supply warranty	7 years parts and labor	
Model	Version Description	Part number
DTP2 T 202 FB	Two Input 4K/60 Floor Box Tx 330 feet (100 m)	60-1586-52

For complete specifications, please go to www.extron.com
Specifications are subject to change without notice.

WORLDWIDE SALES OFFICES

Anaheim • Raleigh • Silicon Valley • Dallas • New York • Washington, DC • Toronto • Mexico City • Paris • London
Frankfurt • Madrid • Stockholm • Amersfoort • Moscow • Dubai • Johannesburg • Tel Aviv • Sydney • Melbourne
Bangalore • Mumbai • New Delhi • Singapore • Seoul • Shanghai • Beijing • Hong Kong • Tokyo

www.extron.com