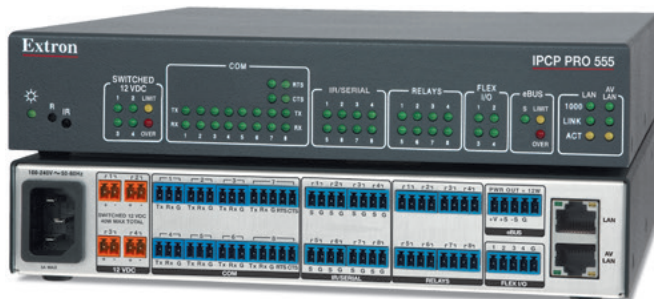


IPCP Pro 555

IP LINK PRO CONTROL PROCESSOR



- ▶ Supports TouchLink® Pro touchpanels and eBUS button panels
- ▶ Dual Gigabit Ethernet ports
- ▶ Dedicated AV LAN port allows AV devices to be isolated from the corporate network
- ▶ Supports secure industry standard communications protocols
- ▶ Supports LinkLicense®
- ▶ Six bidirectional RS-232 serial ports with software handshaking
- ▶ Two bidirectional RS-232/RS-422/RS-485 serial ports with hardware and software handshaking
- ▶ Eight IR/Serial ports for one-way control of external devices
- ▶ Four Flex I/O ports
- ▶ Eight relays for controlling room functions
- ▶ eBUS® port for connecting eBUS-enabled devices
- ▶ DHCP server for AV LAN
- ▶ Supports Ethernet-controllable devices



The Extron IPCP Pro 555 is a versatile, high-performance control processor with a dedicated AV LAN port that is designed to control local AV devices and is secure from outside intrusion or interference. The IPCP Pro 555 features advanced security standards and can be used with multiple TouchLink® Pro touchpanels or eBUS® button panels using a typical network infrastructure. The IPCP Pro 555 is an ideal choice for any application requiring a dedicated, secure AV LAN and support for multiple control signal types.



DESCRIPTION

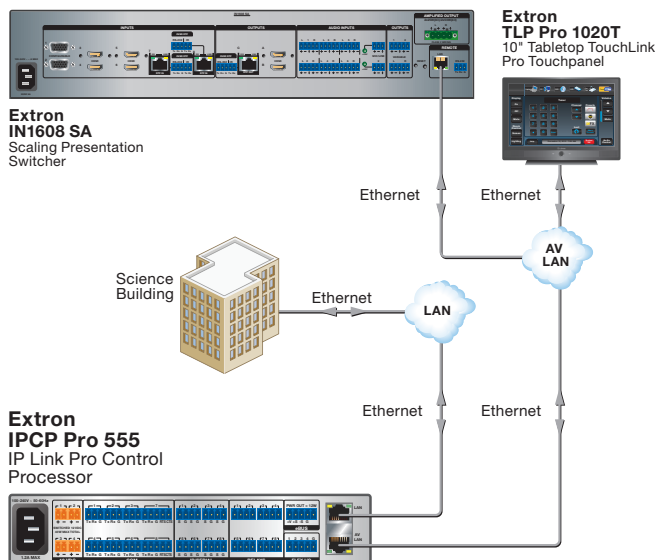
The Extron **IPCP Pro 555** is a versatile, high-performance control processor with dual Gigabit Ethernet ports, including a dedicated AV LAN port. The IPCP Pro 555 features a DHCP server for the AV LAN that streamlines system setup and management. The AV LAN port permits communications from the Ethernet port for remote management and firmware updates for Extron devices, and restricts other Ethernet traffic. The IPCP Pro 555 can communicate with multiple TouchLink Pro touchpanels and eBUS button panels. It can also be used with Extron LinkLicense®, which further enhances the capabilities of Extron Pro Series control systems.

The IPCP Pro 555 is configured using Extron Global Configurator® Plus and Professional software, which provides powerful customization options. It is also compatible with GlobalViewer® Enterprise software for complete, centralized AV resource monitoring, management, and control over a computer network.

KEY FEATURES

- ▶ Ethernet monitoring and control on each Ethernet port
- ▶ AV LAN port allows AV devices to be isolated from the corporate network
- ▶ The AV LAN port only permits communications from the Ethernet port for remote management and firmware updates for Extron devices
- ▶ Supports popular BMS - Building Management Systems protocols

APPLICATION DIAGRAM



SPECIFICATIONS

MEMORY		
SDRAM	512 MB	
Flash	4.5 GB	
SOFTWARE AND CONTROL OPTIONS		
Software	Extron Global Configurator® Plus and Professional for Windows®	
Control options	GlobalViewer®, Extron Control for iPad and Web, TouchLink® Pro touchpanels, or eBUS® button panels	
ETHERNET CONTROL		
Connectors	2 female RJ-45 connectors	
Data rate	10/100/1000Base-T, half/full duplex with autodetect	
Protocols	DHCP, DNS, HTTP, HTTPS, ICMP, NTP, SFTP, SMTP, SNMP, SSH, TCP/IP, UDP/IP	
SERIAL CONTROL		
Quantity/type	2 bidirectional RS-232, RS-422, RS-485 (ports 7 and 8) 6 bidirectional RS-232 (ports 1 through 6)	
FLEX I/O CONTROL		
Quantity/type	4 analog input or digital input/output (configurable)	
Digital inputs		
Input voltage range	0 to 24 VDC, clamped at +30 VDC	
IR/SERIAL CONTROL		
Quantity/type	8 programmable: unidirectional RS-232 (±5 V), or TTL level (0 to 5 V) infrared (carrier and non-carrier) up to 300 kHz	
RELAY CONTROL		
Quantity/type	8 normally open relays	
Relay control contact rating	24 VDC, 1 A	
EBUS CONTROL		
eBUS control ports	(1) 3.5 mm captive screw connector, 5 pole (uses 4 poles)	
Recommended cable type	Extron STP20-2/1000 or STP20-2P/1000 cable	
eBUS power output	12 watts	
SWITCHED DC POWER OUTPUT		
Quantity/type	4 switched 12 VDC outputs	
Power	Maximum 40 watts total	
GENERAL		
Power supply	Internal Input: 100-240 VAC, 50-60 Hz	
Enclosure dimensions	1.7" H x 8.7" W x 10.5" D (1U high, half rack wide) (4.3 cm H x 22.1 cm W x 26.7 cm D) (Depth excludes connectors.)	
Regulatory compliance		
Safety	CE, c-UL, UL UL Listed for use in plenum air handling spaces: meets UL 2043 for heat and smoke release; meets UL 60950 for safety.	
EMI/EMC	CE, C-Tick, FCC Class A, ICES, VCCI	
Environmental	Complies with the appropriate requirements of RoHS, WEEE	
Warranty	3 years parts and labor	
NOTE: All nominal levels are at ±10%.		
Model	Version Description	Part number
IPCP Pro 555	IP Link Pro Control Processor	60-1434-01
IPCP Pro 555	IP Link Pro Control Proc. w/LinkLicense	60-1434-01A

For complete specifications, please go to www.extron.com
Specifications are subject to change without notice.

WORLDWIDE SALES OFFICES

Anaheim • Raleigh • Silicon Valley • Dallas • New York • Washington, DC • Toronto • Mexico City • Paris • London • Frankfurt
Stockholm • Amersfoort • Moscow • Dubai • Johannesburg • Tel Aviv • Sydney • Melbourne • New Delhi • Bangalore
Singapore • Seoul • Shanghai • Beijing • Hong Kong • Tokyo

www.extron.com