

Medium Conference Room Reference Design

This design showcases just one of a few ways you can configure Stem into your medium sized conference rooms. Below you can see two Stem Wall's accompanied by Stem Hub and Control. Each device is connected directly to your network via a single Ethernet cable. The beautiful thing about all Stem Audio devices is you can mix and match them to create your own customized setup. If two Stem Ceilings or two Stem Tables are more your style, go for it. You have the freedom to design your room to meet your needs.



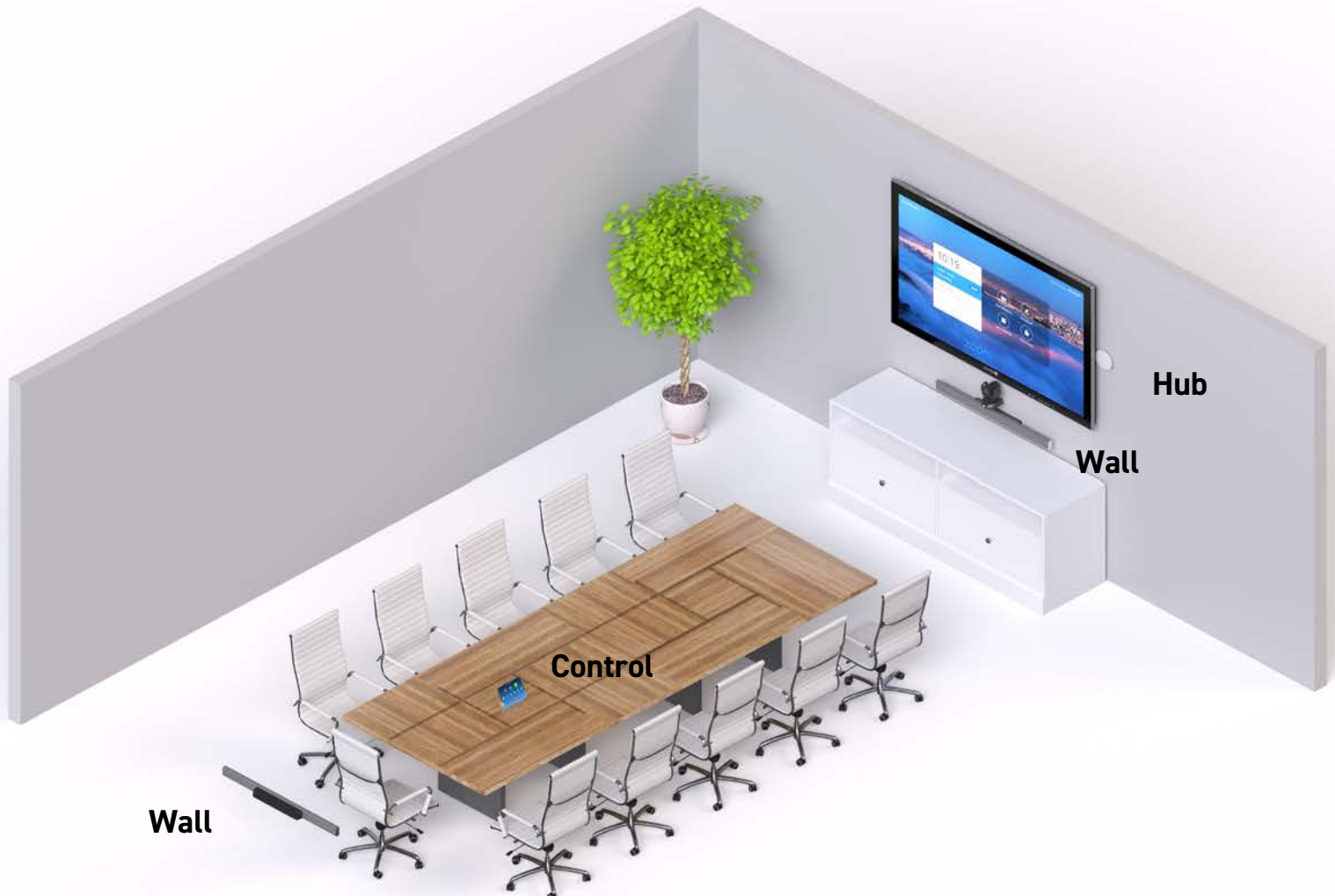
Mix and match all Stem devices for a customized audio solution.



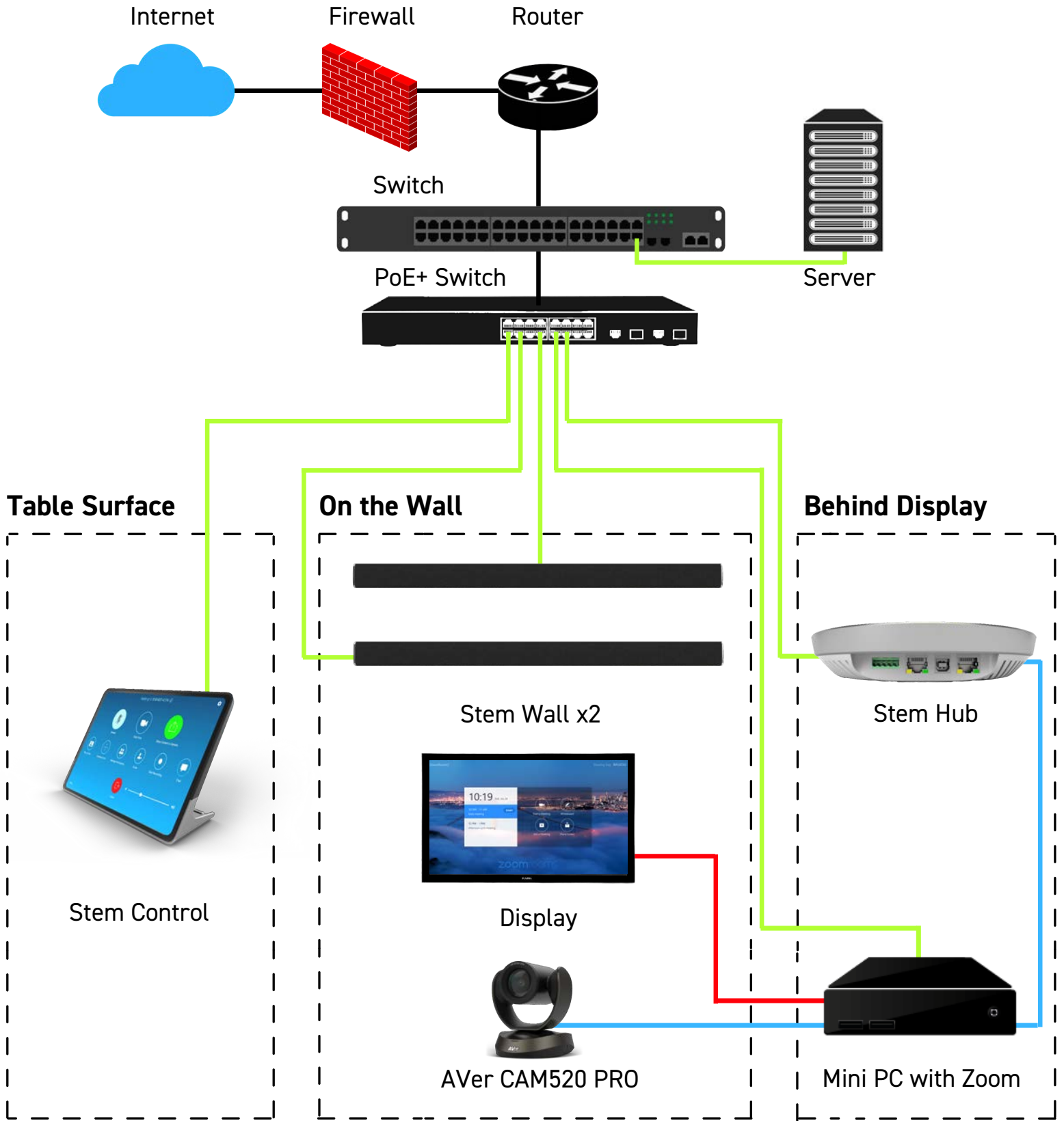
Set up, control, and manage your rooms and devices on your network.



Stem solutions are compatible with your favorite conferencing platforms.



How It All Connects



Connection Key



HDMI Cable



USB Cable



Ethernet Cable