

Network Button Panels

AV SYSTEM CONTROL INTERFACES



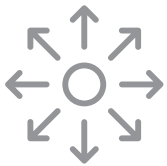
Ethernet Connected and Fully Customizable AV Control

- ▶ Fully customizable Network Button Panels
- ▶ Integrate easily with Extron Pro Series control systems or HC 400 Series products
- ▶ Use standard Ethernet connectivity
- ▶ Program or configure with Extron software
- ▶ Buttons can be customized using Extron Button Label Generator software or the online Custom Button Builder application
- ▶ PoE compatible
- ▶ Section 508 compliant

Extron

Network Button Panels

Extron Network Button Panels are fully-customizable AV system control interfaces for Extron Pro Series control systems and HC 400 Series products. These panels connect to a control processor using standard Ethernet to perform a wide variety of AV system functions such as display On/Off, input switching, volume control, and much more. Buttons can be easily customized using Extron Button Label Generator software or by using the online Custom Button Builder application. The NBP Series also offers the convenience of PoE, which allows the panels to receive power and communication over a single Ethernet cable.



Seven Network Button Panels - Unlimited Applications

With their freedom from distance limitations, a broad variety of button layouts, and customizable labels, there are virtually unlimited applications for Network Button Panels. Network Button Panels work with TouchLink Pro touchpanels and share the same IP Link Pro control processor. This is especially convenient for applications that are designed with simple pushbutton AV control in some locations and sophisticated interactive control in others.



Secure by Design

Network Button Panels are designed to enhance control system functionality and add a measure of convenience for the end users; but like all Extron Pro Series control products, they are part of a control ecosystem specifically designed to be secure from outside intrusion and interference. You can rest assured knowing your control system is safeguarded and that Extron has you covered.



Depending on which button panel you choose, individual buttons can be easily customized using the Extron Button Label Generator or by using the online Custom Button Builder application. All Network Button Panels feature backlit buttons that are easy to read even in low-light environments.

BENEFITS



Easy Expansion and Upgrades

Presentation environments benefit from AV control systems that can be easily modified to fit the evolving demands of their applications. Network Button Panels streamline system expansion and upgrades by using single Ethernet cable connections and sharing the powerful resources of one IP Link Pro control processor.



A Consistent Look and a Familiar Experience

Since Network Button Panels have the same physical appearance as Extron's broad range of MediaLink controllers and eBUS Button Panels, they can be used alongside them throughout a facility while preserving a consistent look and user experience.



MLC 62 IR D
MediaLink
Controller



EBP 106 D
eBUS Button
Panel



NBP 106 D
Network Button
Panel

Extron Driver Library

Extron maintains a library of thousands of Ethernet, serial, and IR drivers that allow our products to control a broad variety of display and source devices. Download individual drivers or a driver package in a single, executable file that can be installed like any software application. We also have an extensive library of Extron Certified Drivers, which have undergone thorough, in-house testing by Extron staff.



Control System Drivers

NETWORK BUTTON PANELS – US GANG

Wallplate Colors

Black and white faceplates and mud ring included

Customizable Buttons

Provide intuitive control for source selection or other system functions

Dual-Color Backlit Buttons

10 dual color, backlit buttons can be labeled in the field for easy identification

PoE Compatible

Uses a PoE switch or injector, eliminating the need for bulky local power supplies



NBP 200 - Front



NBP 200 - Back

LED Indicators

Visual level indicators eliminate guesswork

Control Knob

Control knob with LED indicators for volume or controlling virtually any device via Ethernet, RS-232, or IR

Mounting Options

Compatible with three-gang US electrical box or included mud ring

Secure Communication

Maintains secure communications between panel and control processor

Standard Ethernet

Network Button Panels connect via standard Ethernet

The Extron US Gang style Network Button Panels are fully-customizable AV system control interfaces for Extron Pro Series control systems and HC 400 Series products. Network Button Panels connect to a control processor using standard Ethernet. These customizable, easy-to-use control panels work in conjunction with a control processor to perform a wide variety of AV system functions, such as display On/Off, input switching, volume control, and much more. US Gang style Network Button Panels feature dual-colored backlit buttons for easy operation in low-light environments and a control knob with LED indicators for controlling various functions on virtually any device. All Network Button Panels feature the convenience of PoE. These US Gang style models mount in either two or three-gang junction boxes and include black and white faceplates and mud rings.

SERIES COMMON FEATURES

- ▶ Fully customizable network button panel integrates easily with an Extron Pro Series control system or HC 400 Series products
- ▶ Network Button Panels use standard Ethernet connectivity
- ▶ PoE compatible - Product is powered directly by a PoE switch or injector, eliminating the need for bulky local power supplies.
- ▶ Removable button caps make changing labels in the field easy
- ▶ Section 508 Compliant
- ▶ Supports the Extron Control App



NBP 50

Network Button Panel with 6 Buttons - US 2-Gang

Unique Features

- Six dual-color, customizable, backlit buttons
- Includes black and white, two-gang faceplates and mud ring

Model	Version Description	Part Number
NBP 50	2-Gang, Black and White, 6 Button	60-1953-01



NBP 100

Network Button Panel with 6 Buttons - US 2-Gang

Unique Features

- Six dual-color, customizable, backlit buttons
- Control knob with LED indicators can be used for volume, or for controlling specific functions on virtually any device that supports Ethernet, RS-232, or IR
- Includes black and white, two-gang faceplates and mud ring

Model	Version Description	Part Number
NBP 100	2-Gang, Black and White, 6 Button	60-1794-01



NBP 200

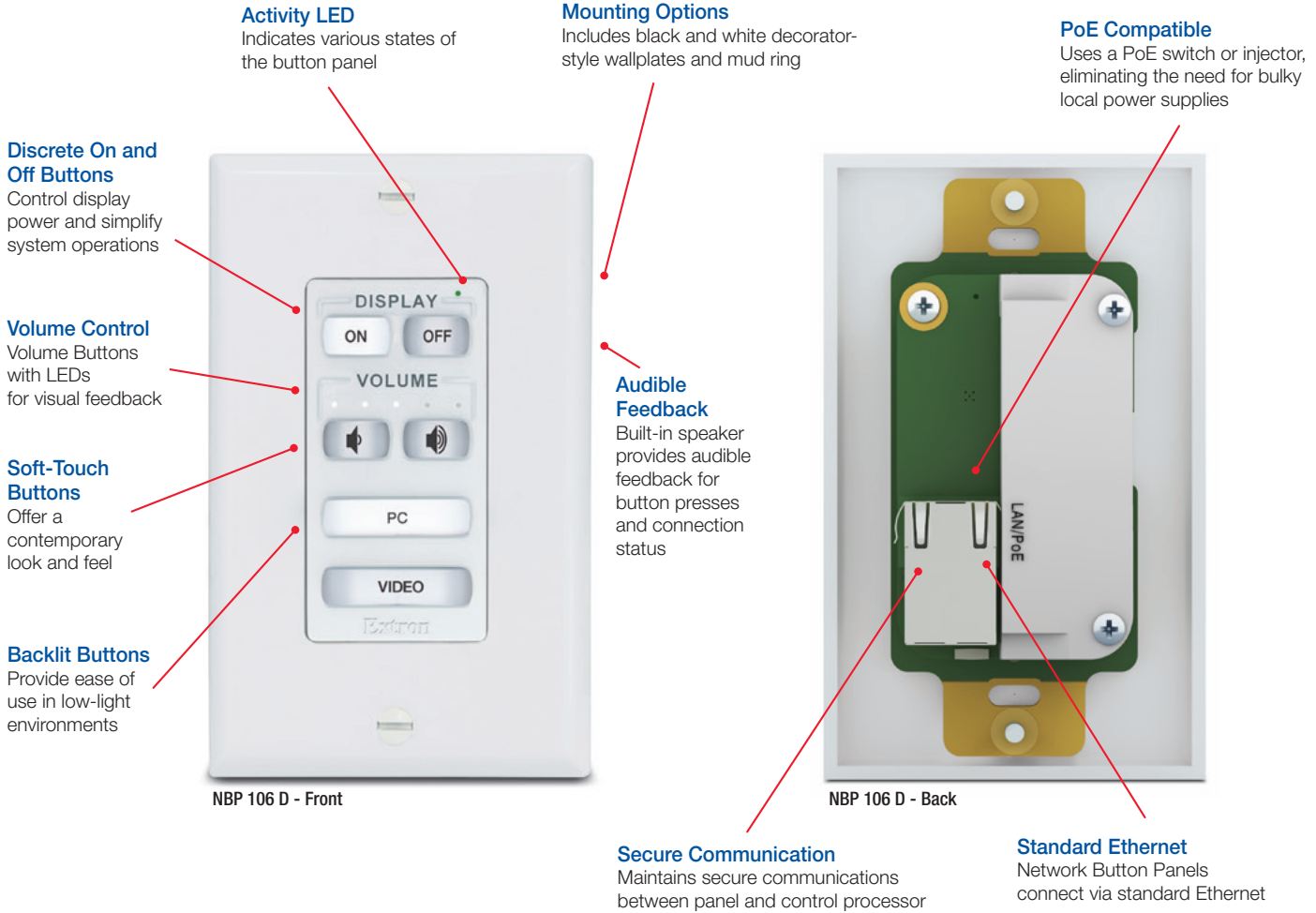
Network Button Panel with 10 Buttons - US 3-Gang

Unique Features

- Ten dual-color, customizable, backlit buttons
- Control knob with LED indicators can be used for volume, or for controlling specific functions on virtually any device that supports Ethernet, RS-232, or IR
- Includes black and white, three-gang faceplates and mud ring

Model	Version Description	Part Number
NBP 200	3-Gang, Black and White, 10 Button	60-1795-01

NETWORK BUTTON PANELS – DECORATOR-STYLE



The Extron Decorator-Style Network Button Panel Series are fully-customizable AV system control interfaces for Extron Pro Series control systems and HC 400 Series products. Network Button Panels connect to a control processor using standard Ethernet. These customizable, easy-to-use control panels work in conjunction with a control processor to perform a wide variety of AV system functions, such as display On/Off, input switching, volume control, and much more. Decorator-Style Network Button Panels feature customizable, soft-touch buttons that are backlit for easy operation in low-light environments. All Network Button Panels feature the convenience of PoE. These Decorator-Style models mount in single gang junction boxes and include black and white decorator-style wallplates and mud rings.

SERIES COMMON FEATURES

- ▶ Fully customizable network button panel integrates easily with an Extron Pro Series control system or HC 400 Series products
- ▶ Network Button Panels use standard Ethernet connectivity
- ▶ PoE compatible - Product is powered directly by a PoE switch or injector, eliminating the need for bulky local power supplies.
- ▶ Soft-touch buttons that can be easily customized using Extron's Custom Button Builder
- ▶ Section 508 Compliant
- ▶ Supports the Extron Control App



NBP 105 D

Network Button Panel with 5 Buttons - Decorator-Style Wallplate

Unique Features

- Five backlit, soft-touch buttons that can be customized using Extron's Custom Button Builder

Model	Version Description	Part Number
NBP 105 D	Decorator-Style, Black and White, 5 Button	60-1688-01



NBP 106 D

Network Button Panel with 6 Buttons - Decorator-Style Wallplate

Unique Features

- Six backlit, soft-touch buttons that can be customized using Extron's Custom Button Builder
- Volume adjustment buttons with LED level indication
- Discrete On and Off display power
- Activity LED indicates various states of the button panel

Model	Version Description	Part Number
NBP 106 D	Decorator-Style, Black and White, 6 Button	60-1817-01



NBP 108 D

Network Button Panel with 8 Buttons - Decorator-Style Wallplate

Unique Features

- Eight backlit, soft-touch buttons that can be customized using Extron's Custom Button Builder
- Volume adjustment buttons with LED level indication
- Discrete On and Off display power
- Activity LED indicates various states of the button panel

Model	Version Description	Part Number
NBP 108 D	Decorator-Style, Black and White, 8 Button	60-1189-01



NBP 110 D

Network Button Panel with 10 Buttons - Decorator-Style Wallplate

Unique Features

- Ten backlit, soft-touch buttons that can be customized using Extron's Custom Button Builder

Model	Version Description	Part Number
NBP 110 D	Decorator-Style, Black and White, 10 Button	60-1689-01

NBP 1200C OVERVIEW

Patented modular design

For fast assembly and serviceability, AV connectivity can be installed or serviced from the top of the enclosure, after it is installed.

Supports a wide range of cable management applications

Cable Cubby enclosures offer a variety of sizes and configurations to support your cable management application.

Ten backlit, soft-touch buttons

Easily customized using Extron's Custom Button Builder

Choice of AC-only or AC+USB Power Modules

AC-only or AC+USB Power Modules are available for the US, Europe, and other major world markets. The available AC+USB modules feature two 5 VDC USB power outlets and up to 2.1 A / 10.5 watts of power for charging mobile devices.

AV connectivity

Enclosures include brackets for mounting Retractor or Retractor XL cable retraction modules, AAP - Architectural Adapter Plates, or AV cables to the left or right of the AC module. Optional bracket kits allow the AC power module to be mounted in the center of the enclosure for additional flexibility in configuring AV connectivity.

Choice of black anodized or brushed aluminum finish

The top surface of Cable Cubby Series enclosures is designed to blend seamlessly with modern furniture and room decor.

Low-profile lid with full width cable pass-through

Provides convenient access to AV cables and AC power, whether open or closed.



The Extron NBP 1200C is a furniture-mountable Cable Cubby® enclosure with a Network Button Panel integrated into the lid. It conveniently combines intuitive AV control, connectivity, and power, and works with all Extron Pro Series control systems and HC 400 Series products. This fully-customizable, easy-to-use control panel works with a control processor to perform a wide variety of AV system functions such as display On/Off, input switching, volume control, and much more. The flip-up button panel has ten customizable, soft-touch buttons that are backlit for easy operation in low-light environments. The NBP 1200C enables integrators to deploy a contemporary, furniture-mountable Network Button Panel with cable management and easy access to AV connectivity and power.

The Cable Cubby Builder is an interactive tool that guides users through the process of selecting AC power modules, AV connectivity, cables, and installation accessories. As you build your Cable Cubby, a bill of materials is prepared automatically. When you're finished, the Builder allows you to review your Cable Cubby and make any last minute changes before placing your order. Please note that a Dealer Login is required for this tool.

Features

- ▶ Fully customizable Network Button Panel integrates easily with an Extron Pro Series control system or HC 400 Series products
- ▶ Ten backlit, soft-touch buttons that can be customized using Extron's Custom Button Builder
- ▶ Compatible with all Extron IP Link Pro control processors and HC 400 Series systems
- ▶ Network Button Panels use standard Ethernet connectivity
- ▶ Network Button Panels connect to the control processor and each other using a single cable that carries both power and communication
- ▶ Cable Cubby 1202 design offers easy access to AV, data, and power connections
 - Accommodates one AC 100 Series or AC+USB 200 Series Power Module, plus three Retractor modules, eight AV cables, or three AAP™ AV Connectivity Modules
 - Slim enclosure is 2" (51 mm) shorter than previous model, making it ideal for conference tables, desks, lecterns, and other work areas where space is at a premium
 - Patented modular design for fast assembly and serviceability
- ▶ Supports the Extron Control App

IP LINK PRO CONTROL PROCESSORS – STANDALONE



IP Link Pro series control processors work seamlessly with Network Button Panels, eBUS devices, and TouchLink® Pro interfaces. These control processors are either standalone or integrated into other Extron products and enable almost any AV device to be controlled, monitored, and accessed from a standard networks or the Internet. They are available with a wide variety of RS-232, IR, relay, contact closure, Flex I/O, eBUS, and Ethernet port combinations, including a secure AV LAN port. This allows displays, switchers, source devices, screen control systems, and lighting systems to be networked together for centralized management and operation by the control system.

Configuration or Programming

IP Link Pro control processors can be configured using Global Configurator Plus or Global Configurator Professional software or programmed using Global Scripter.

Unlock Powerful New Features with LinkLicense

Extron LinkLicense® is a quick, cost-effective way for people to add even more powerful capabilities to Extron products. Each type of LinkLicense unlocks a unique set of features that add convenience and expand the functionality available in your system. It is applied per-system, enabling you to enhance the capabilities and performance where and when you need it. Activating a LinkLicense on a product is quick and effortless, so you can take immediate advantage of all the benefits.

Secure by Design - The AV LAN Port

Many IP Link Pro control processors are equipped with dedicated AV LAN ports designed to isolate local AV devices and safeguard them against outside intrusion and interference. These control processors are available as standalone products or integrated into other Extron products, such as our IN1608 xi Series of scaling presentation switchers and the DTP CrossPoint 4K IPCP Series of presentation matrix switchers. In addition to the AV LAN ports, these control processors feature advanced security standards and Gigabit Ethernet ports, designed to ensure compatibility with multiple TouchLink Pro touchpanels using a standard network infrastructure.

Mounting Options

An assortment of mounting kits are available for use with IP Link Pro control processors. All control processors are housed in a size-efficient and durable 1" to 1U high and one-quarter to one half rack width enclosure. They are rack and furniture-mountable, and can also be mounted to a projector pole. Their compact size and mounting options help make IP Link Pro control processors very easy to integrate into existing, as well as new AV systems.

IP LINK PRO CONTROL PROCESSORS – EMBEDDED



Powerful Integrated Control Processor

The IN1808, IN1608 xi, and DTP CrossPoint 4K Series feature a built-in Extron IP Link® Pro control processor with a secure, dedicated three-port AV LAN switch and one standard Ethernet port. The network switch ports of the AV LAN are designed to control local AV devices, and safeguard them from outside intrusion or interference. The control processors deliver high-speed processing and abundant control port capacity for complete, customizable control of an entire AV system, including all source devices and displays, plus lighting, window shades, projection screens, occupancy sensing, and more. Simply connect a touchpanel or button panel to create a complete AV control system.

IN1808 IPCP

The Extron IN1808 IPCP is an eight input seamless presentation switcher that supports signal resolutions up to 4K/60 at 4:4:4. It incorporates Extron-patented Vector 4K seamless scaling technology specifically engineered for the most demanding applications. It features DisplayPort and HDMI inputs, HDMI output and Extron DTP2 extension to send video, audio, and control signals up to 330 feet (100 meters) over a shielded CATx cable. A built-in Extron IPCP Pro control processor and integrated 100 watt class D power amplifier make the IN1808 IPCP an all-in-one system design solution.

IN1608 xi IPCP

The Extron IN1608 xi IPCP is an HDCP-compliant scaling presentation switcher with four HDMI inputs, two universal analog video inputs, and two Extron DTP® inputs. It includes dual HDMI outputs, one DTP output, an integrated Class D audio power amplifier, and a built-in IPCP Pro control processor for complete AV system control. The DTP inputs and output work with DTP endpoints to extend video, audio, and bidirectional control signals. Each DTP transmitter/receiver link requires just a single shielded CATx cable. The DTP output is configurable for HDBaseT compatibility.

DTP CrossPoint 4K IPCP

The industry-leading Extron DTP CrossPoint® 4K IPCP is a definitive game-changer for 4K presentation systems. These highly versatile presentation matrix switchers deliver all of the technologically advanced capabilities necessary to design and integrate advanced AV systems in one box. They incorporate a matrix switcher with 4K inputs and outputs, built-in scalars that are powered by Extron Vector™ 4K scaling technology and support seamless switching, integrated DTP and XTP signal extension, comprehensive audio DSP and AEC capabilities unmatched in the industry, a high performance mono or stereo amplifier, and an advanced control processor for complete AV system control.

HC 400 SERIES



The HC 402, HC 403, and HC 404 are easy-to-use AV system solutions for collaboration spaces. These meeting space collaboration systems consist of a switching transmitter and a scaling receiver pair that extend video, audio, and power up to 230 feet (70 meters) over a single CATx cable. Advanced Extron scaling technology ensures excellent image quality with maximum detail and color accuracy. Built-in control capabilities facilitate automatic source switching, display control, and integration with occupancy sensors for an intuitive and effortless end-user experience. Designed for professional integration, the low-profile HC 400 series transmitter and receiver are ideal for mounting on a wall or for discreet placement beneath tables, behind displays, or wherever needed to meet application requirements.

Effortless Collaboration

The HC 402, HC 403, and HC 404 are fully operational out of the box. Automatic power control and switching allow users to collaborate with minimal interaction with the AV hardware. The system powers the display on when a presenter connects a source device, and automatically switches to new source devices as they are connected. When no signal is detected, the system will power down after a predetermined time period. For further flexibility, the unit can integrate with Extron OCS 100 occupancy sensors to automatically power the system on when users enter the room.

Bring Your Own Device

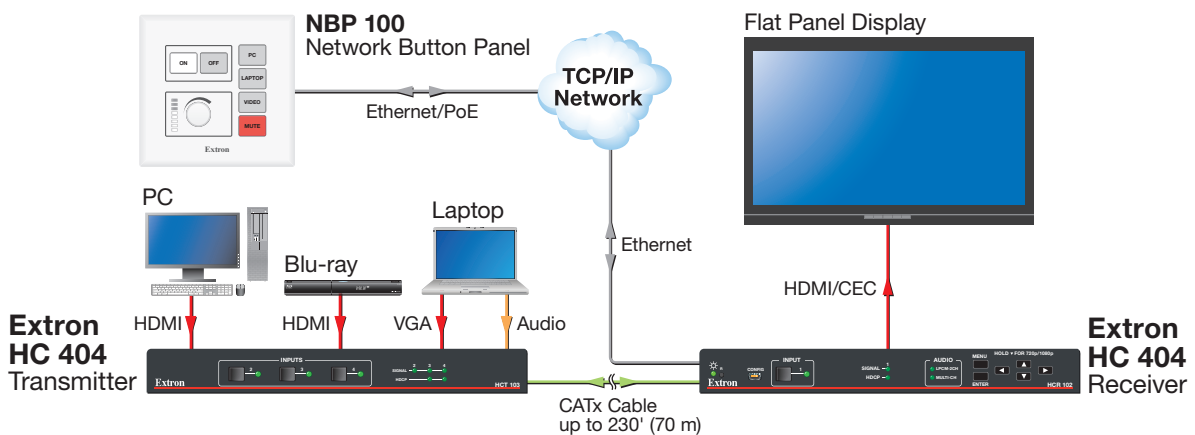
Connecting a ShareLink wireless collaboration gateway to the receiver's HDMI input adds support for wireless BYOD – Bring Your Own Device environments, providing effective collaboration and content sharing from a wide variety of mobile devices.

Reliable Operation

The HC 402, HC 403, and HC 404 are highly reliable AV system solutions designed for professional requirements. They deliver high quality extension of video and audio signals for maximum performance and reliability. Multiple input connections are provided to support a wide range of video sources and resolutions. Advanced Extron video scaling ensures excellent video quality and EDID Minder® technology ensures a consistently reliable image at the display.

Easy to Integrate

The HC 402, HC 403, and HC 404 are simple to install and set up. A single power supply connected at the receiver can provide power to both the transmitter and receiver. Managing system AV settings is easy with Extron PCS – Product Configuration Software, which also allows convenient control of multiple systems. Ethernet connectivity facilitates management, monitoring, and control of AV devices over a standard network. HC 403 and HC 404 offer built-in control processing, eliminating the need to connect additional equipment.



Global Configurator Plus and Global Configurator Professional

Global Configurator® is Extron's most powerful and versatile control system configuration software. It is designed to be used exclusively with Extron Pro Series Control products, including eBUS button panels, TouchLink Pro touchpanels, IP Link Pro control processors, and MediaLink Plus controllers. Powerful features, such as conditional logic, variables, and macros provide greater flexibility for more elaborate control system designs. Global Configurator has two modes. Global Configurator Plus is ideal for smaller applications requiring one control processor and one control interface. Global Configurator Professional is suited for applications requiring multiple control processors, enhanced functionality, and advanced configuration. Access to Global Configurator Professional requires an individual to successfully complete ECP Certification.

Features

- ▶ **Designed to be used exclusively with Extron Pro Series control systems**
- ▶ **Conditional logic** – Allows control operations to be contingent on a variety of separate conditions
- ▶ **Local variables** – Allows the user to emulate external feedback within the project



- ▶ **Supports systems using GlobalViewer Enterprise**
- ▶ **Create controller groups (Accessible from Global Configurator Professional mode only)**
- ▶ **Controller Swap** – Allows an already configured control processor to be changed to a different model
- ▶ **Library of enhanced Extron Certified device drivers**

GlobalViewer Enterprise

GlobalViewer® Enterprise - GVE software simplifies AV system resource management with intuitive control for hundreds of common AV tasks. Whether you're working with 5 or 5000 rooms, GVE provides a powerful, flexible way to manage, monitor, and control nearly any device over a standard network. Support teams will appreciate the agility and flexibility GVE provides to access usage data, create reports, and control the system from any computer on the network. The Help Desk view offers a look at the entire enterprise in a single window and access to detailed room data and control with just a click of a mouse.

Features

- ▶ **Easily manages all of the AV devices and meeting rooms across the campus and enterprise**
- ▶ **Track and analyze device and room usage, proactively plan maintenance activities, and maintain inventory lists using customizable reports**
- ▶ **Custom reporting tools** – Customize GVE data views from each room and device by displaying specific alerts, schedules, monitors, logs, or calendar events from within common web applications you already use.



- ▶ **Extron GlobalViewer Enterprise Commissioning with every installation ensures a trouble-free system installation and optimal performance**
- ▶ **Enhanced monitors and schedules based on location and device type**
- ▶ **Manage individual rooms using the room control terminal directly from the help desk**
- ▶ **Supports many common Web browsers** – GVE is installed on a Windows server and is accessible from anywhere on the network using Internet Explorer®, Firefox®, Safari®, and Google Chrome®

Extron Control

Control App for Control Systems

Extron Control is an easy-to-use AV control system app that gives users complete access to Extron control systems directly from Apple iOS or Android devices. After a quick initial setup, your device connects to the desired room, allowing a seamless, highly-responsive control experience. Extron Control automatically loads the user interfaces present on any Extron control product without a lengthy setup and customization process. The familiar interfaces emulate the TouchLink touchpanel, eBUS button panel, Network Button Panel, or MediaLink controller in your room, and all button presses are kept in sync between the app and your Extron control devices. Extron Control is available for immediate download from the iTunes App Store and Google Play.

Features

- ▶ Provides a convenient point of control for Extron control systems using your Apple iOS or Android devices
- ▶ Extron Control for iOS supports all TouchLink, TouchLink Pro touchpanels, eBUS button panels, Network Button Panels, and Ethernet-enabled MediaLink, MediaLink Plus controllers



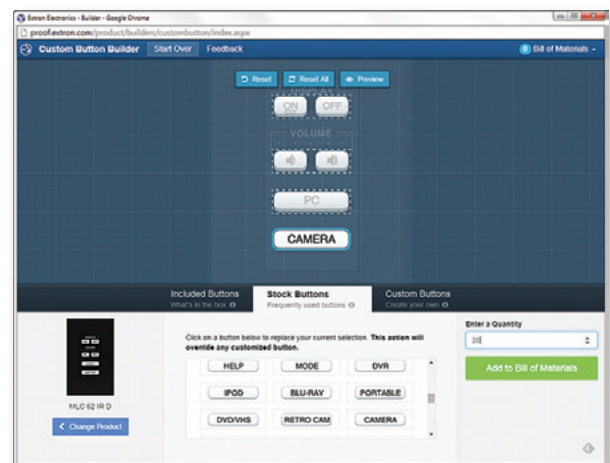
- ▶ Extron Control for Android supports all TouchLink Pro touchpanels, eBUS button panels, Network Button Panels, and all MediaLink Plus controllers
- ▶ Familiar user interface provides the same experience as the touchpanel, button panel, or controller
- ▶ Supports Extron LinkLicense
- ▶ Room Manager allows users to easily add control products and customize room lists

Custom Button Builder

The Extron Custom Button Builder enables convenient and simple customization of soft-touch, backlit buttons for a variety of Extron control products. This dynamic online tool allows individual button customization as well as graphical representations of whole product button layouts with many options for easy edits. The sign-off page provides a detailed order summary as well as graphical representations of all buttons ordered.

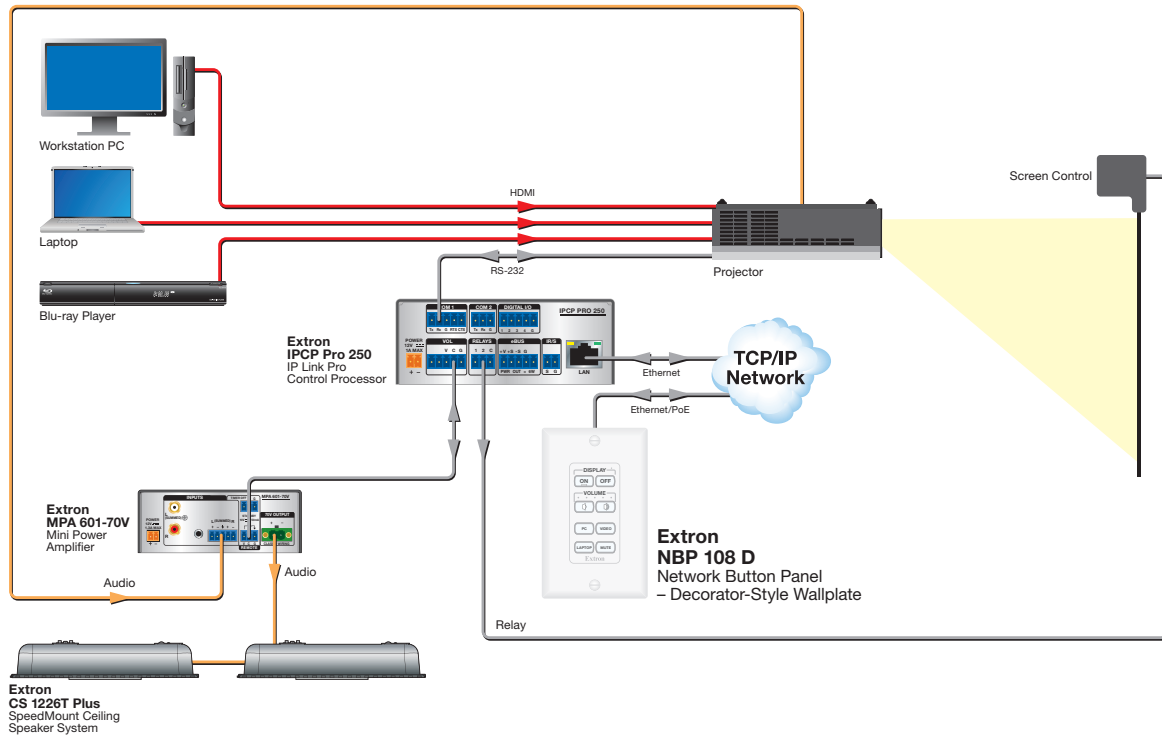
Features

- ▶ Customize text for individual buttons or entire products
- ▶ Easily change text for single or dual line buttons while adjusting font size and monitoring character count
- ▶ Choose from a wide variety of symbols, and mix and match symbols and text
- ▶ A running Bill of Materials keeps track of all buttons and generates a part number for easy reordering
- ▶ When finished, the sign-off page provides order details, part number, and graphical representations of the customized buttons



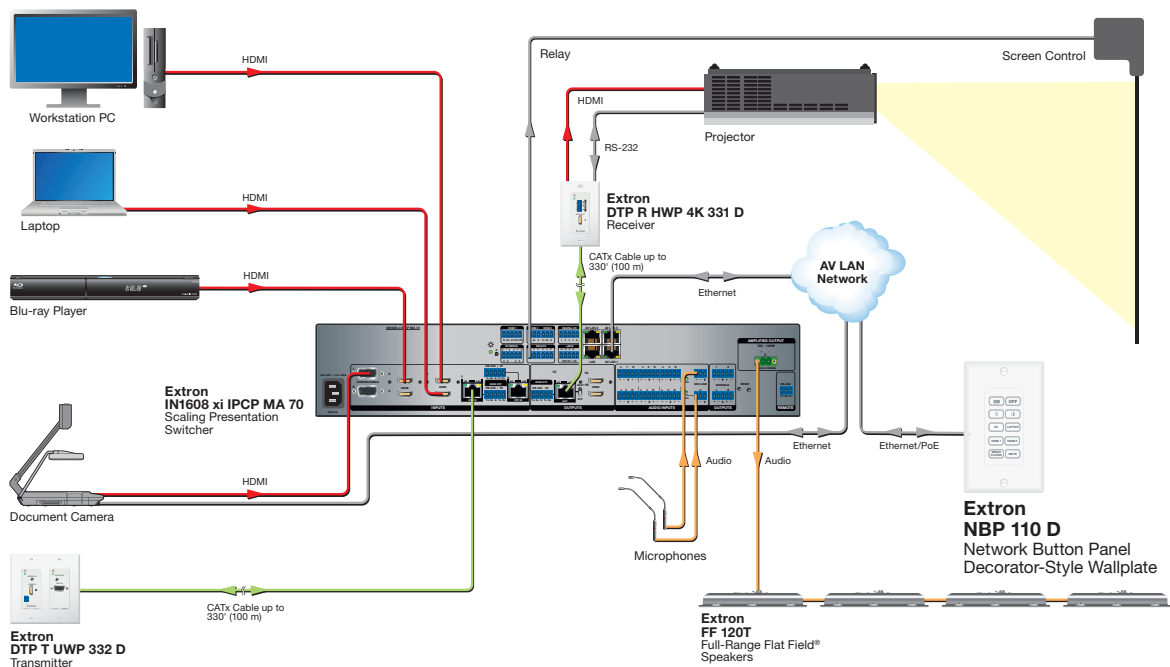
NBP 108 D

In this presentation environment, an NBP 108 D Network Button Panel connects to an IPCP Pro 250 Control Processor via a TCP/IP network, providing control for projector power, volume, and source selection.



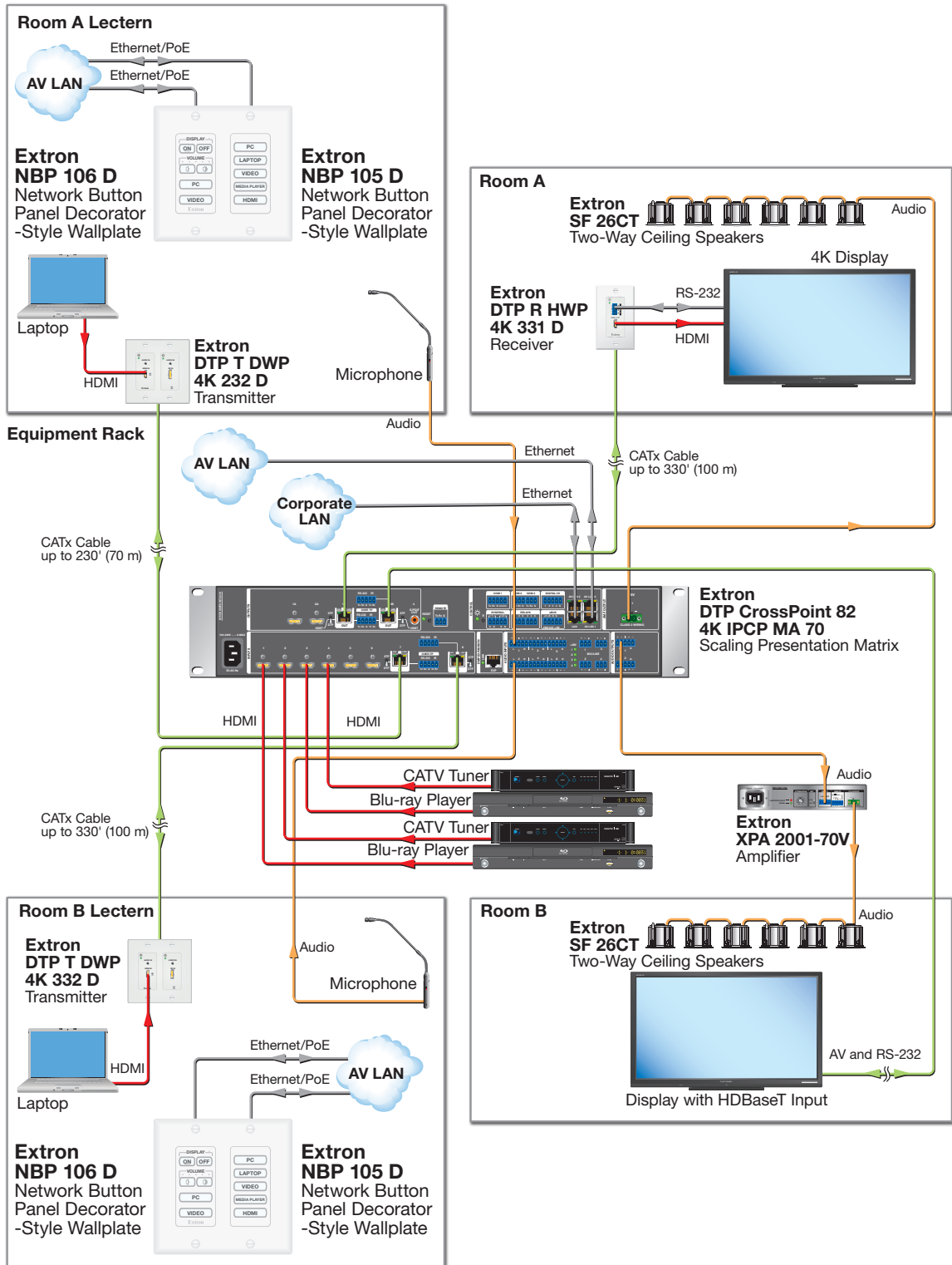
NBP 110 D

In this application, an NBP 110 D is connected to the AV LAN port of an embedded IPCP control processor on an IN1608 xi IPCP MA 70 via the AV LAN Network. The button panel is being used to switch between several source devices connected to the switcher as well as control the power and volume of the projector. With the high button count of the NBP 110 D, this outcome is easily achieved.



NBP 105 D and NBP 106 D

In this multi-room application, an NBP 106 D and an NBP 105 D have been combined in a two-gang decorator-style wallplate and are used in both rooms. The panels have been placed on an isolated AV LAN port of the DTP CrossPoint 82 4K IPCP MA 70 for secure control of AV devices used in the system.



SPECIFICATIONS

MEMORY	
SDRAM	512 MB
Flash	512 MB
SOFTWARE	
Configuration software	Global Configurator® Plus and Professional
Programming software	Global Scriptor®
Control apps	Extron Control
Resource management software	GlobalViewer® Enterprise
Utilities	Toolbelt, embedded web page
ETHERNET	
Network interface controllers (NICs)	1
Connector	1 female RJ-45 connector
Data rate	10/100Base-T, half/full duplex with autodetect
Protocols	DHCP, DNS, HTTP, HTTPS, ICMP, NTP, SFTP, SMTP, SNMP, SSH, TCP/IP, UDP/IP
GENERAL	
Power input requirements	Power over Ethernet (PoE) (complies with PoE 802.3af, class 3)
Power consumption	
NBP 105 D	
Device	2.0 watts
Device and PoE injector	5.1 watts
NBP 106 D	
Device	2.2 watts
Device and PoE injector	5.1 watts
NBP 108 D	
Device	1.9 watts
Device and PoE injector	5.0 watts
NBP 110 D	
Device	2.0 watts
Device and PoE injector	4.6 watts
NBP 100	
Device	2.2 watts
Device and PoE injector	3.9 watts
NBP 200	
Device	3.0 watts
Device and PoE injector	4.0 watts
NBP 1200C	
Device	TBD watts
Device and PoE injector	TBD watts
Temperature/humidity	Storage: -40 to +158 °F (-40 to +70 °C) / 10% to 90%, noncondensing Operating: +32 to +122 °F (0 to +50 °C) / 10% to 90%, noncondensing
Cooling	Convection, no vents
Thermal dissipation	
NBP 105 D	
Device	6.7 BTU/hr
Device and PoE injector	17.1 BTU/hr
NBP 106 D	
Device	7.5 BTU/hr
Device and PoE injector	17.3 BTU/hr
NBP 108 D	
Device	6.4 BTU/hr
Device and PoE injector	16.8 BTU/hr
NBP 110 D	

Device	6.5 BTU/hr	
Device and PoE injector	15.7 BTU/hr	
NBP 100		
Device	7.3 BTU/hr	
Device and PoE injector	13.3 BTU/hr	
NBP 200		
Device	10.0 BTU/hr	
Device and PoE injector	13.5 BTU/hr	
NBP 1200C		
Device	TBD BTU/hr	
Device and PoE injector	TBD BTU/hr	
Mounting		
Furniture or wall mount		
NBP Decorator-style Series	Yes, in a standard US 1-gang electrical junction box or mud ring	
NBP 100	Yes, in a standard US 2-gang electrical junction box or mud ring	
NBP 200	Yes, in a standard US 3-gang electrical junction box or mud ring	
Furniture mount		
NBP 1200C	Yes	
Enclosure type		
NBP 1200C	Metal	
All other models	Plastic faceplate and high-impact plastic rear enclosure	
Product weight		
Decorator-style models	0.2 lbs (0.1 kg)	
NBP 100	1.2 lb (0.5 kg)	
NBP 200	1.6 lb (0.7 kg)	
NBP 1200C	TBD lb (TBD kg)	
Regulatory compliance		
NBP 1200C	CE, C-Tick, c-UL, FCC Class A, ICES, UL Complies with the appropriate requirements of RoHS, WEEE, and Section 508 of the Rehabilitation Act (29 U.S.C. 794d).	
All other models	CE, C-Tick, c-UL, FCC Class A, ICES, UL, VCCI Complies with the appropriate requirements of RoHS, WEEE, and Section 508 of the Rehabilitation Act (29 U.S.C. 794d).	
Product warranty	3 years parts and labor	
NOTE: All nominal levels are at ±10%.		
Model	Version Description	Part number
NBP 100	2-Gang, Black and White, 6 Button	60-1794-01
NBP 200	3-Gang, Black and White, 10 Button	60-1795-01
NBP 105 D	Decorator-Style, Black and White, 5 Button	60-1688-01
NBP 106 D	Decorator-Style, Black and White, 6 Button	60-1817-01
NBP 108 D	Decorator-Style, Black and White, 8 Button	60-1818-01
NBP 110 D	Decorator-Style, Black and White, 10 Button	60-1689-01
NBP 1200 C	Cable Cubby - Black, AC Module Not Included	60-1835-01
NBP 1200 C	Cable Cubby - Br Alum, AC Module Not Included	60-1835-08

For complete specifications, please go to www.extron.com
Specifications are subject to change without notice.

WORLDWIDE SALES OFFICES

Anaheim • Raleigh • Silicon Valley • Dallas • New York • Washington, DC • Toronto • Mexico City • Paris • London
Frankfurt • Madrid • Stockholm • Amersfoort • Moscow • Dubai • Johannesburg • Tel Aviv • Sydney • Melbourne
Bangalore • Mumbai • New Delhi • Singapore • Seoul • Shanghai • Beijing • Hong Kong • Tokyo

www.extron.com