

Ultra-Wide Displays

21:9 5K LCD



PANA
105 & 81



WHY 21:9?

“Going into displays is a natural progression for Jupiter because our processors manage the displays,” Sidney Rittenberg Jr, CEO of Jupiter . “But we wanted to do something different.” So the concept for a 21:9 screen was born—or reborn.

Pana’s 21:9 ultra-wide 5K native resolution brings a refreshing form factor to the conventional display market. Our 8-foot wide Pana 105 canvas optimizes team productivity allowing for improved interaction and work place collaboration. Pana provides 33% more pixels with 5K resolution giving the user more real estate in which to work.

Whether you are viewing the immersive Pana 105 or expansive Pan 81, the form factor of each Pana is inspired by our natural human ability to see wider than we see taller.

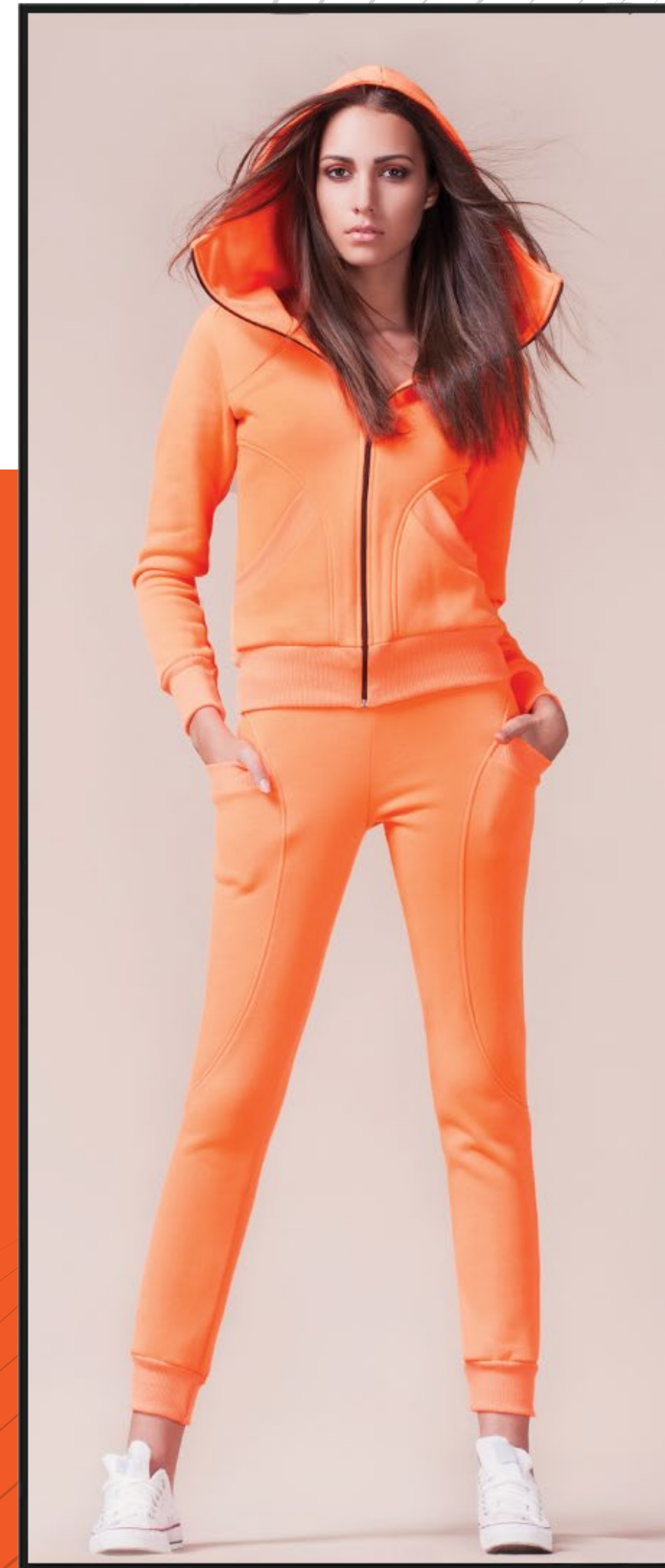


16:9

A more spacious display ensures more pertinent information gets placed in our panoramic visual sweet spot, increasing our comprehension and productivity.

Stop traffic with true-to-life digital signage

Content is king. Stop sacrificing the natural size of your content. By leveraging Pana's 21:9 aspect ratio, you can create the impact your content deserves.



**Jupiter
PANA 105**



Legacy 86" monitor
currently found on
the market



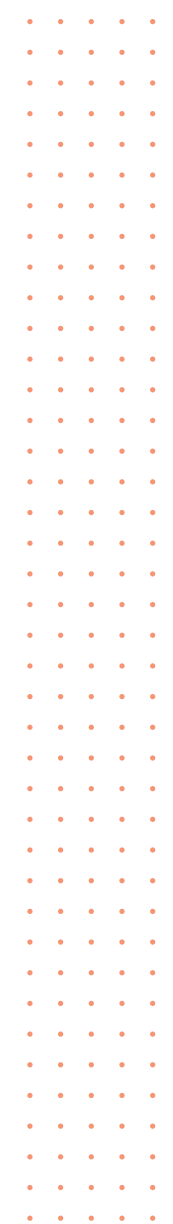
Microsoft Teams Front Row ready

Due to its 21:9 format, Microsoft now recommends using this aspect ratio for an enhanced meeting rooms' configuration when using Teams.

The large single display perfectly shows the Front Row mode workflow and brings a completely new immersive experience and allows ease of interaction for all participants.

Create better visual experiences for meetings.

We believe in the future of the modern workspace and have crafted Pana around this goal.



Best in class for Enterprise collaboration and critical data visualization

Crystal clear 5K LCD display

USB-C hub with charging

Portrait or landscape

Direct-bonding touch for Pana 105

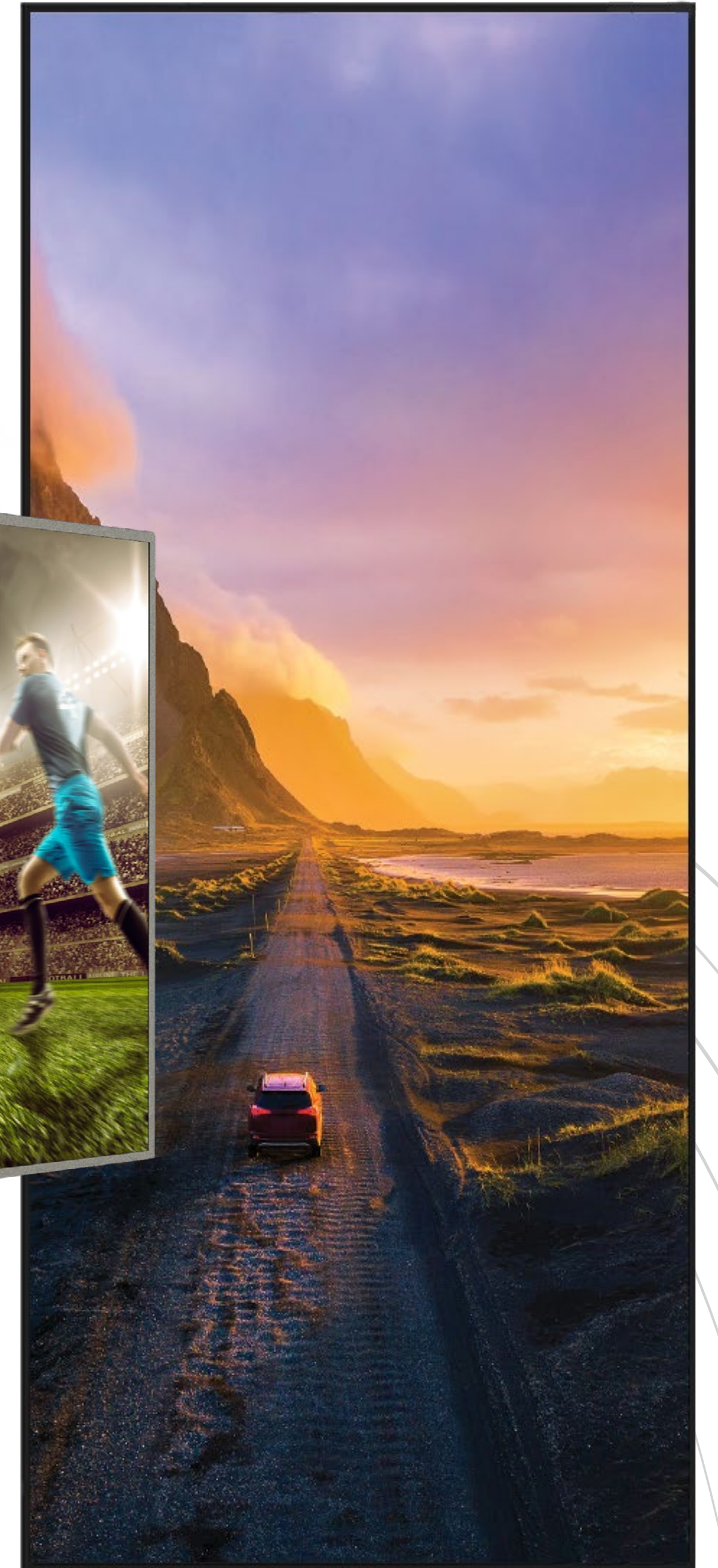
Metal-mesh capacitive for Pana 81

SimpleShare® collaboration software enabled

Jupiter



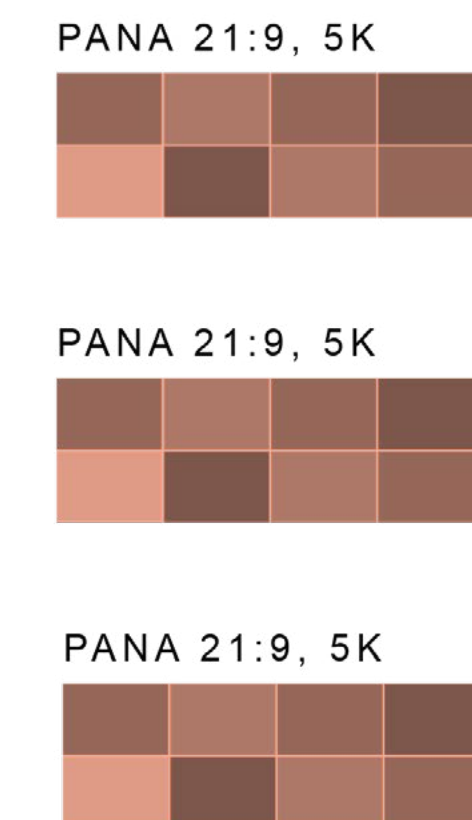
**HDR
certified**



Tailored for synergies

Jupiter video processors are 5K compatible and are best suited to drive our displays.

Canvas® enabled processors allow seamless management of content and access—the perfect combination for secure installations.



Each display can have up to 16 windows and some of our processors can drive multiple Panas without the need of extra hardware.

Sustainability for a better world

Jupiter strives to make an impact for the world and future generations. As a company, Jupiter continues to identify and invest in eco-friendly materials and strive to be a leader in the industry.



Energy star certified



Visualize impact.

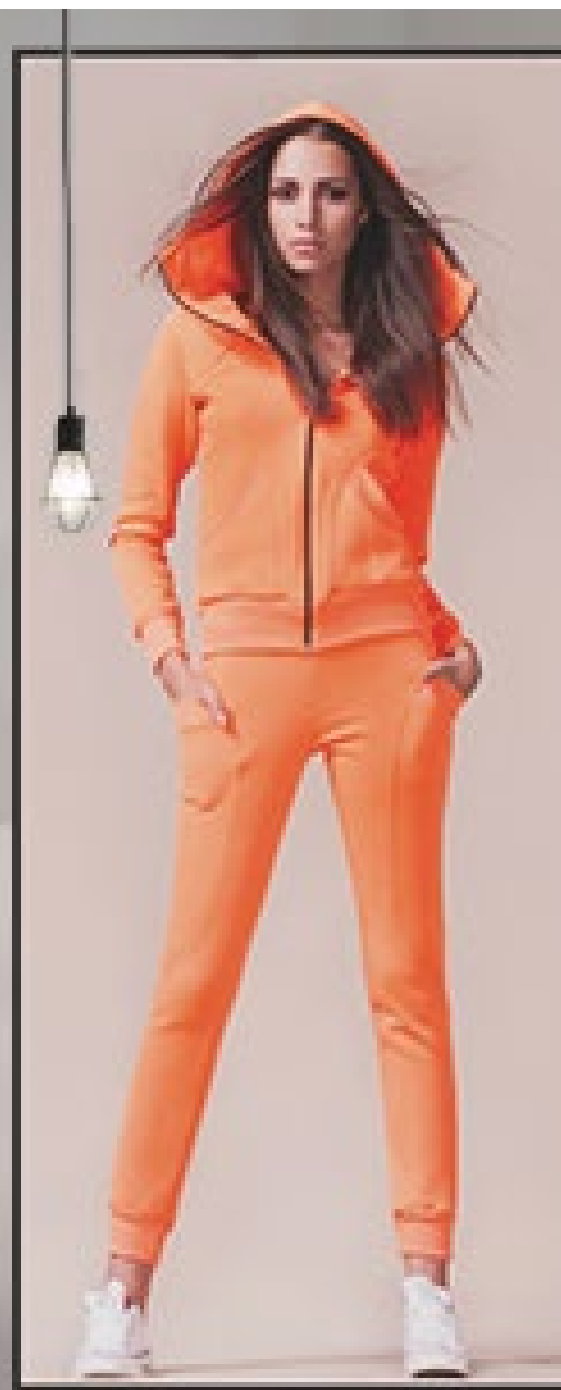
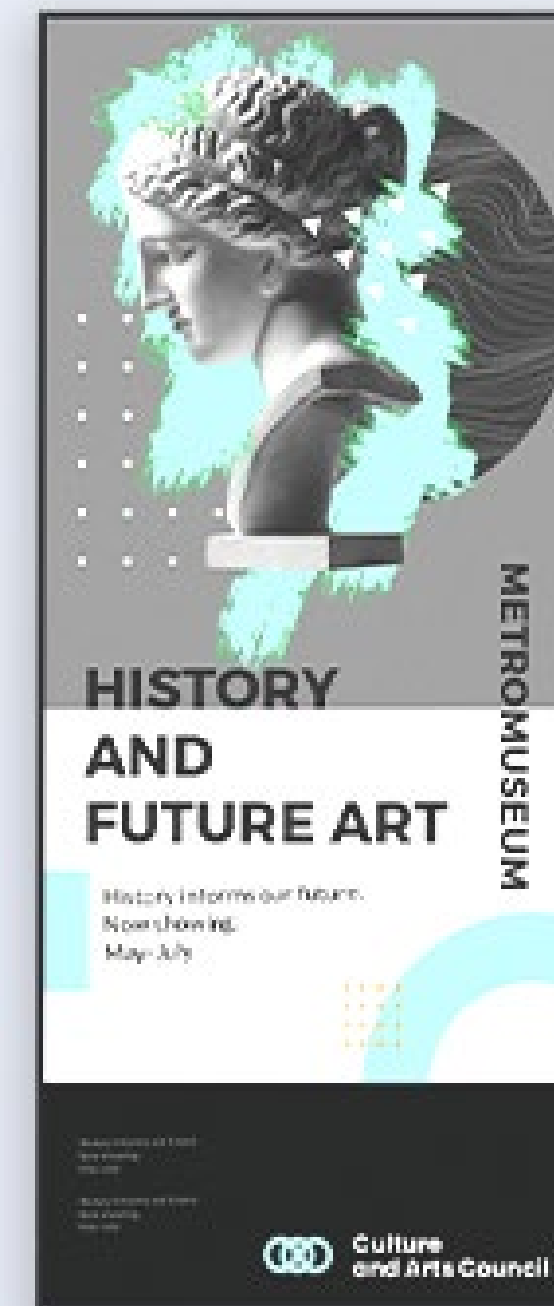
Pana 105 and 81 can be used in a variety of scenarios. Its versatility can be adapted to your industry's display needs. Both models are available in touch and non-touch versions.

Retail

Command & Control

Museums

Plus more





**For more information on
Jupiter's industry-leading
21:9 displays visit Jupiter.com
or contact sales@jupiter.com**