

The two completely flat ends are its distinctive feature. Professional is a versatile screen, ideal for flush-mounted installation in different types of technical recesses; the particular shape of its ends allows it to be placed right up against the wall for all-round use. As the name suggests, a design that elects it as the ideal product for the professional Audio Visual channel.

Easy to install, Professional also earns full marks for its aesthetics: the abutting base creates a seamless whole with the screen once it is closed, and prevents any dust from settling onto the projection surface when it is not in use.

See page **156** for Technical data



Create your own screen with the PSS

- > **Personalized dimensions:** width and height
- > **Roller type:** motorized standard, radio integrated or manual winch
- > **Case:** with standard case or with quick-installation system
- > **Case color:** available in white, black or custom color
- > **Height of Top:** from 5 to 45 cm
- > **Projection surface fall:** front or rear with optional reverse-roll installation
- > **Side of command/motor:** right or left

Projection Surfaces (see page 6)

- > ReferenceWhite / ReferenceGrey
- > VisionWhite / VisionWhitePro
- > VisionAcoustik
- > VisionRear DB / VisionRear only without black borders

Surfaces Fireproof Certifications



Standard Accessories

- > Kit with wall or ceiling mount brackets
- > Unipolar selector switch
- > Remote control (only for radio-integrated version)
- > Winch pole for rolling and unrolling the projection surface in manual versions

PSS Formats

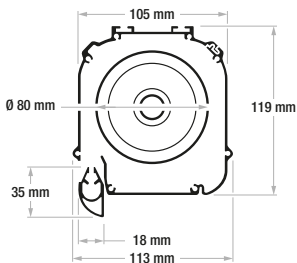
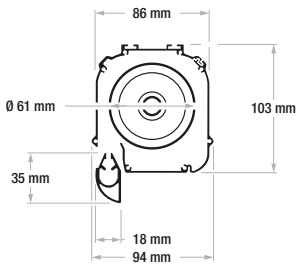
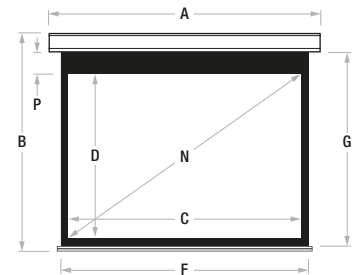
1:1	1.33:1	1.60:1	1.78:1	2.35:1	2.37:1	2.39:1	2.40:1
	4:3	16:10	16:9	21:9			

Optional Accessories

- > Extension brackets for screens up to 60 cm
- > Receiver and RF remote control for motorized screen (3 modalities: basic, automatic and compatible with domotic systems)
- > Receiver and infrared remote control

Professional 50 mm borders

Aspect Ratio	Viewing Width	Viewing Height	Diagonal Inches	Overall Width	Overall Height	Surface Width	Surface Height	Standard Drop	Total Maximum Drop	Packaging Dimensions	Net Weight	Gross Weight
	C	D	N	A	B	F	G	P	mm	mm	kg	kg
1.00 (1:1)	1830	1830	102	2000	2068	1930	1930	50	50	2200x150x180	11	12
	2330	2330	130	2500	2584	2430	2430	50	50	2700x150x180	14	17
	2830	2830	158	3000	3134	2930	2980	100	100	3200x150x180	23	26
1.33 (4:3)	1830	1376	90	2000	1614	1930	1476	50	450	2200x150x180	13	16
	2330	1752	115	2500	1990	2430	1852	50	400	2700x150x180	17	20
	2830	2128	139	3000	2432	2930	2278	100	450	3200x150x180	25	28
1.60 (16:10)	1830	1144	85	2000	1382	1930	1244	50	450	2200x150x180	12	13
	2330	1456	108	2500	1694	2430	1556	50	450	2700x150x180	17	20
	2830	1769	131	3000	2073	2930	1919	100	450	3200x150x180	23	26
1.78 (16:9)	1830	1028	83	2000	1266	1930	1128	50	450	2200x150x180	12	13
	2330	1309	105	2500	1547	2430	1409	50	450	2700x150x180	17	20
	2830	1590	128	3000	1894	2930	1740	100	450	3200x150x180	23	26
2.35 (21:9)	1830	779	78	2000	1017	1930	879	50	450	2200x150x180	12	13
	2330	991	100	2500	1229	2430	1091	50	450	2700x150x180	17	20
	2830	1204	121	3000	1508	2930	1354	100	450	3200x150x180	23	26
2.37	1830	772	78	2000	1010	1930	872	50	450	2200x150x180	12	13
	2330	983	100	2500	1221	2430	1083	50	450	2700x150x180	17	20
	2830	1194	121	3000	1498	2930	1344	100	450	3200x150x180	23	26
2.39	1830	766	78	2000	1004	1930	866	50	450	2200x150x180	12	13
	2330	975	99	2500	1213	2430	1075	50	450	2700x150x180	17	20
	2830	1184	121	3000	1488	2930	1334	100	450	3200x150x180	23	26
2.40	1830	763	78	2000	1001	1930	863	50	450	2200x150x180	12	13
	2330	971	99	2500	1209	2430	1071	50	450	2700x150x180	17	20
	2830	1179	121	3000	1483	2930	1329	100	450	3200x150x180	23	26
	3330	1388	142	3500	1692	3430	1538	100	450	3700x150x180	26	31



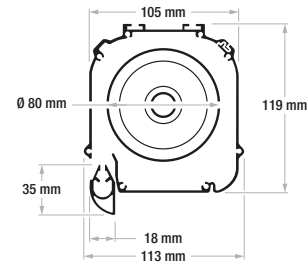
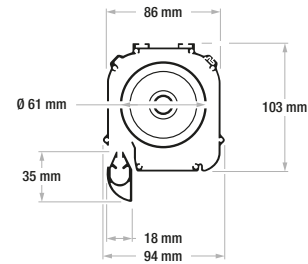
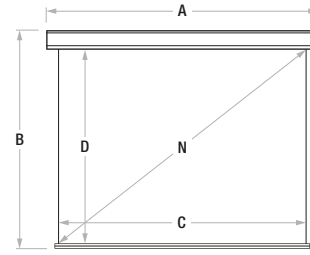
In certain circumstances, due to the surface's height, it is necessary to use a case with the rolling tube of 80 mm.

Professional 70 mm borders

Aspect Ratio	Viewing Width	Viewing Height	Diagonal Inches	Overall Width	Overall Height	Surface Width	Surface Height	Standard Drop	Total Maximum Drop	Packaging Dimensions	Net Weight	Gross Weight
	C	D	N	A	B	F	G	P	mm	mm	kg	kg
1.00 (1:1)	1790	1790	100	2000	2068	1930	1930	70	70	2200x150x180	11	12
	2290	2290	128	2500	2584	2430	2430	70	70	2700x150x180	14	17
	2790	2790	155	3000	3114	2930	2960	100	100	3200x150x180	23	26
1.33 (4:3)	1790	1346	88	2000	1624	1930	1486	70	450	2200x150x180	13	16
	2290	1722	113	2500	2000	2430	1862	70	400	2700x150x180	17	20
	2790	2098	137	3000	2422	2930	2268	100	450	3200x150x180	25	28
1.60 (16:10)	1790	1119	83	2000	1397	1930	1259	70	450	2200x150x180	12	13
	2290	1431	106	2500	1709	2430	1571	70	450	2700x150x180	17	20
	2790	1744	130	3000	2068	2930	1914	100	450	3200x150x180	23	26
1.78 (16:9)	1790	1006	81	2000	1284	1930	1146	70	450	2200x150x180	12	13
	2290	1287	103	2500	1565	2430	1427	70	450	2700x150x180	17	20
	2790	1567	126	3000	1891	2930	1737	100	450	3200x150x180	23	26
2.35 (21:9)	1790	762	77	2000	1040	1930	902	70	450	2200x150x180	12	13
	2290	974	98	2500	1252	2430	1114	70	450	2700x150x180	17	20
	2790	1187	119	3000	1511	2930	1357	100	450	3200x150x180	23	26
2.37	1790	755	76	2000	1033	1930	895	70	450	2200x150x180	12	13
	2290	966	98	2500	1244	2430	1106	70	450	2700x150x180	17	20
	2790	1177	119	3000	1501	2930	1347	100	450	3200x150x180	23	26
2.39	1790	749	76	2000	1027	1930	889	70	450	2200x150x180	12	13
	2290	958	98	2500	1236	2430	1098	70	450	2700x150x180	17	20
	2790	1167	119	3000	1491	2930	1337	100	450	3200x150x180	23	26
2.40	1790	746	76	2000	1024	1930	886	70	450	2200x150x180	12	13
	2290	954	98	2500	1232	2430	1094	70	450	2700x150x180	17	20
	2790	1163	119	3000	1487	2930	1333	100	450	3200x150x180	23	26
	3290	1371	140	3500	1695	3430	1541	100	450	3700x150x180	26	31

Professional Without borders

Aspect ratio	Viewing Width	Viewing Height	Diagonal Inches	Overall Width	Overall Height	Packaging Dimensions	Net Weight	Gross Weight
	C	D	N	A	B	mm	kg	kg
1,00 (1:1)	1930	1930	107	2000	2068	2200x150x180	11	12
	2430	2430	135	2500	2584	2700x150x180	14	17
	2930	2930	163	3000	3084	3200x150x180	23	26
1,33 (4:3)	1930	1451	95	2000	1589	2200x150x180	13	16
	2430	1827	120	2500	1965	2700x150x180	17	20
	2930	2203	144	3000	2357	3200x150x180	25	28
	3430	2579	169	3500	2733	3700x150x180	28	33
1,60 (16:10)	1930	1206	90	2000	1344	2200x150x180	12	13
	2430	1519	113	2500	1657	2700x150x180	17	20
	2930	1831	136	3000	1985	3200x150x180	23	26
1,78 (16:9)	1930	1084	87	2000	1222	2200x150x180	12	13
	2430	1365	110	2500	1503	2700x150x180	17	20
	2930	1646	132	3000	1800	3200x150x180	23	26
	3430	1927	155	3500	2081	3700x150x180	26	31
2,35 (21:9)	1930	821	83	2000	959	2200x150x180	12	13
	2430	1034	104	2500	1172	2700x150x180	17	20
	2930	1247	125	3000	1401	3200x150x180	23	26
	3430	1460	147	3500	1614	3700x150x180	26	31
2,37	1930	814	82	2000	952	2200x150x180	12	13
	2430	1025	104	2500	1163	2700x150x180	17	20
	2930	1236	125	3000	1390	3200x150x180	23	26
	3430	1447	147	3500	1601	3700x150x180	26	31
2,39	1930	808	82	2000	946	2200x150x180	12	13
	2430	1017	104	2500	1155	2700x150x180	17	20
	2930	1226	125	3000	1380	3200x150x180	23	26
	3430	1435	146	3500	1589	3700x150x180	26	31
2,40	1930	804	82	2000	942	2200x150x180	12	13
	2430	1013	104	2500	1151	2700x150x180	17	20
	2930	1221	125	3000	1375	3200x150x180	23	26
	3430	1429	146	3500	1583	3700x150x180	26	31
3930	1638	168	4000	1792	4200x150x180	29	35	



In certain circumstances, due to the surface's height, it is necessary to use a case with the rolling tube of 80 mm.